

Product datasheet for **TA340141**

RAB40B Rabbit Polyclonal Antibody

Product data:

Product Type:	Primary Antibodies
Applications:	WB
Recommended Dilution:	WB
Reactivity:	Human
Host:	Rabbit
Isotype:	IgG
Clonality:	Polyclonal
Immunogen:	The immunogen for anti-RAB40B antibody: synthetic peptide directed towards the middle region of human RAB40B. Synthetic peptide located within the following region: YAERLGVTFEVSPLCNFNITESFTELARIVLLRHGMDRLWRPSKVLSLQ
Formulation:	Liquid. Purified antibody supplied in 1x PBS buffer with 0.09% (w/v) sodium azide and 2% sucrose.
Concentration:	lot specific
Purification:	Affinity Purified
Conjugation:	Unconjugated
Storage:	Store at -20°C as received.
Stability:	Stable for 12 months from date of receipt.
Predicted Protein Size:	31 kDa
Gene Name:	RAB40B, member RAS oncogene family
Database Link:	NP_006813 Entrez Gene 10966 Human Q12829
Background:	RAB40B has similarity to a yeast protein which suggests a role of the gene product in regulating secretory vesicles. The protein encoded by this gene has similarity to a yeast protein which suggests a role of the gene product in regulating secretory vesicles.
Synonyms:	RAR; SEC4L

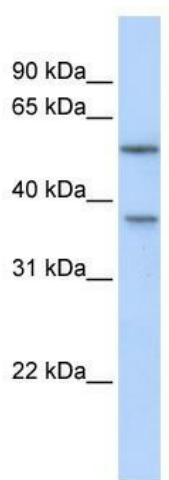


[View online »](#)

Note: Immunogen Sequence Homology: Dog: 100%; Pig: 100%; Rat: 100%; Human: 100%; Mouse: 100%; Rabbit: 100%; Zebrafish: 100%; Guinea pig: 100%; Horse: 92%; Bovine: 92%; Yeast: 82%

Protein Families: Druggable Genome

Product images:



WB Suggested Anti-RAB40B Antibody Titration:
0.2-1 ug/ml; ELISA Titer: 1: 12500; Positive
Control: 293T cell lysate RAB40B is supported by
BioGPS gene expression data to be expressed in
HEK293T