

## Product datasheet for **TA340140**

### PNRC1 Rabbit Polyclonal Antibody

#### Product data:

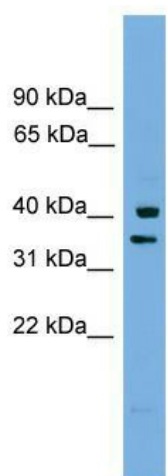
Product Type:	Primary Antibodies
Applications:	WB
Recommended Dilution:	WB
Reactivity:	Human
Host:	Rabbit
Isotype:	IgG
Clonality:	Polyclonal
Immunogen:	The immunogen for anti-PNRC1 antibody: synthetic peptide directed towards the middle region of human PNRC1. Synthetic peptide located within the following region: KEVLKSKMGKSEKIALPHGQLVHGIHLYEQPKINRQKSKYNLPLTKITSA
Formulation:	Liquid. Purified antibody supplied in 1x PBS buffer with 0.09% (w/v) sodium azide and 2% sucrose. <i>Note that this product is shipped as lyophilized powder to China customers.</i>
Concentration:	lot specific
Purification:	Affinity Purified
Conjugation:	Unconjugated
Storage:	Store at -20°C as received.
Stability:	Stable for 12 months from date of receipt.
Predicted Protein Size:	35 kDa
Gene Name:	proline rich nuclear receptor coactivator 1
Database Link:	<a href="#">NP_006804</a> <a href="#">Entrez Gene 10957 Human</a> <a href="#">Q12796</a>
Background:	PNRC1 is a nuclear receptor coactivator. PNRC1 may play a role in signal transduction.
Synonyms:	B4-2; PNAS-145; PROL2; PRR2
Note:	Immunogen Sequence Homology: Dog: 100%; Pig: 100%; Rat: 100%; Horse: 100%; Human: 100%; Mouse: 100%; Guinea pig: 100%; Bovine: 93%; Rabbit: 93%



[View online »](#)

Protein Families: Druggable Genome, Transcription Factors

### Product images:



WB Suggested Anti-PNRC1 Antibody Titration:  
0.2-1 ug/ml; Positive Control: Human brain