

## Product datasheet for **TA340138**

### EHD1 Rabbit Polyclonal Antibody

#### Product data:

Product Type:	Primary Antibodies
Applications:	WB
Recommended Dilution:	WB
Reactivity:	Human
Host:	Rabbit
Isotype:	IgG
Clonality:	Polyclonal
Immunogen:	The immunogen for anti-EHD1 antibody: synthetic peptide directed towards the middle region of human EHD1. Synthetic peptide located within the following region: AKKEMVKSCLPNTVLGKIWKLADVDKDGLLDDEEFALANHLIKVKLEGHE
Formulation:	Liquid. Purified antibody supplied in 1x PBS buffer with 0.09% (w/v) sodium azide and 2% sucrose. <i>Note that this product is shipped as lyophilized powder to China customers.</i>
Concentration:	lot specific
Purification:	Affinity Purified
Conjugation:	Unconjugated
Storage:	Store at -20°C as received.
Stability:	Stable for 12 months from date of receipt.
Predicted Protein Size:	60 kDa
Gene Name:	EH domain containing 1
Database Link:	<a href="#">NP_006786</a> <a href="#">Entrez Gene 10938 Human Q9H4M9</a>
Background:	This gene belongs to a highly conserved gene family encoding EPS15 homology (EH) domain-containing proteins. The protein-binding EH domain was first noted in EPS15, a substrate for the epidermal growth factor receptor. The EH domain has been shown to be an important motif in proteins involved in protein-protein interactions and in intracellular sorting. The protein encoded by this gene is thought to play a role in the endocytosis of IGF1 receptors.



[View online »](#)

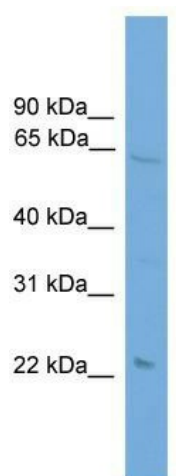
**Synonyms:** H-PAST; HPAST1; PAST; PAST1

**Note:** Immunogen Sequence Homology: Pig: 100%; Rat: 100%; Horse: 100%; Human: 100%; Mouse: 100%; Rabbit: 100%; Guinea pig: 100%; Bovine: 93%; Zebrafish: 93%; Dog: 86%

**Protein Families:** Druggable Genome

**Protein Pathways:** Endocytosis

### Product images:



WB Suggested Anti-EHD1 Antibody Titration: 0.2-1 ug/ml; Positive Control: A549 cell lysate