

Product datasheet for **TA340137**

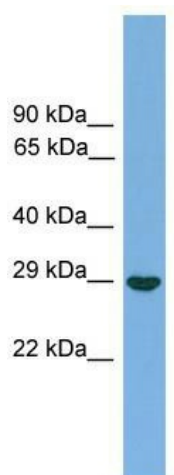
spindlin 1 (SPIN1) Rabbit Polyclonal Antibody

Product data:

| | |
|-------------------------|---|
| Product Type: | Primary Antibodies |
| Applications: | WB |
| Recommended Dilution: | WB |
| Reactivity: | Human |
| Host: | Rabbit |
| Isotype: | IgG |
| Clonality: | Polyclonal |
| Immunogen: | The immunogen for anti-SPIN1 antibody: synthetic peptide directed towards the middle region of human SPIN1. Synthetic peptide located within the following region: YQLDDYKEGDLRIMPDSNDSPPAEREPGEVWDSLVGKQVEYAKEDGSKR |
| Formulation: | Liquid. Purified antibody supplied in 1x PBS buffer with 0.09% (w/v) sodium azide and 2% sucrose. <i>Note that this product is shipped as lyophilized powder to China customers.</i> |
| Concentration: | lot specific |
| Purification: | Affinity Purified |
| Conjugation: | Unconjugated |
| Storage: | Store at -20°C as received. |
| Stability: | Stable for 12 months from date of receipt. |
| Predicted Protein Size: | 29 kDa |
| Gene Name: | spindlin 1 |
| Database Link: | NP_006708 Entrez Gene 10927 Human Q9Y657 |
| Background: | SPIN1 may play a role in cell-cycle regulation during the transition from gamete to embryo. |
| Synonyms: | SPIN; TDRD24 |
| Note: | Immunogen Sequence Homology: Dog: 100%; Pig: 100%; Rat: 100%; Human: 100%; Mouse: 100%; Bovine: 100%; Rabbit: 100%; Zebrafish: 100%; Guinea pig: 100%; Horse: 85% |



[View online »](#)

Product images:

WB Suggested Anti-SPIN1 Antibody Titration: 0.2-1 ug/ml; ELISA Titer: 1: 1562500; Positive Control: Human brain