

Product datasheet for **TA340136**

Smpdl3a Rabbit Polyclonal Antibody

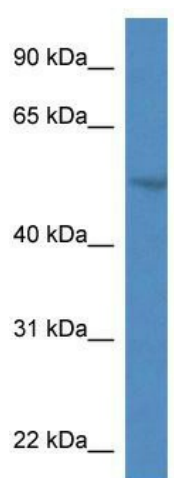
Product data:

Product Type:	Primary Antibodies
Applications:	WB
Recommended Dilution:	WB
Reactivity:	Mouse
Host:	Rabbit
Isotype:	IgG
Clonality:	Polyclonal
Immunogen:	The immunogen for anti-Smpdl3a antibody: synthetic peptide corresponding to a region of Mouse. Synthetic peptide located within the following region: YQLILSAFDIKNSGQEASFMIWTGDSPPHVPVPELSTGTVIKVITNMTM
Formulation:	Liquid. Purified antibody supplied in 1x PBS buffer with 0.09% (w/v) sodium azide and 2% sucrose. <i>Note that this product is shipped as lyophilized powder to China customers.</i>
Concentration:	lot specific
Purification:	Affinity Purified
Conjugation:	Unconjugated
Storage:	Store at -20°C as received.
Stability:	Stable for 12 months from date of receipt.
Predicted Protein Size:	49 kDa
Gene Name:	sphingomyelin phosphodiesterase, acid-like 3A
Database Link:	NP_065586 Entrez Gene 57319 Mouse P70158
Background:	The function of this protein remains unknown.
Synonyms:	0610010C24Rik; ASM3A; ASML3A; FLJ20177; yR36GH4.1
Note:	Immunogen Sequence Homology: Pig: 100%; Rat: 100%; Human: 100%; Mouse: 100%; Guinea pig: 100%; Dog: 93%; Horse: 93%; Bovine: 93%; Rabbit: 93%; Zebrafish: 86%



[View online »](#)

Product images:



WB Suggested Anti-Smpd13a Antibody; Titration:
1.0 ug/ml; Positive Control: Mouse Heart