

Product datasheet for **TA340135**

COPS8 Rabbit Polyclonal Antibody

Product data:

Product Type:	Primary Antibodies
Applications:	WB
Recommended Dilution:	WB
Reactivity:	Human, Mouse
Host:	Rabbit
Isotype:	IgG
Clonality:	Polyclonal
Immunogen:	The immunogen for anti-COPS8 antibody: synthetic peptide directed towards the middle region of human COPS8. Synthetic peptide located within the following region: TRMVLPRKPVAGALDVSFNKFIPLSEPAVPPIPNEQQLARLTDYVAFLE
Formulation:	Liquid. Purified antibody supplied in 1x PBS buffer with 0.09% (w/v) sodium azide and 2% sucrose. <i>Note that this product is shipped as lyophilized powder to China customers.</i>
Concentration:	lot specific
Purification:	Affinity Purified
Conjugation:	Unconjugated
Storage:	Store at -20°C as received.
Stability:	Stable for 12 months from date of receipt.
Predicted Protein Size:	23 kDa
Gene Name:	COP9 signalosome subunit 8
Database Link:	NP_006701 Entrez Gene 108679 Mouse Entrez Gene 10920 Human Q99627



[View online »](#)

Background:

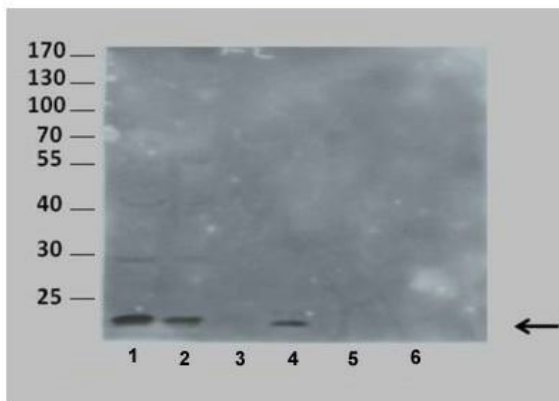
The protein encoded by this gene is one of the eight subunits of COP9 signalosome, a highly conserved protein complex that functions as an important regulator in multiple signaling pathways. The structure and function of COP9 signalosome is similar to that of the 19S regulatory particle of 26S proteasome. COP9 signalosome has been shown to interact with SCF-type E3 ubiquitin ligases and act as a positive regulator of E3 ubiquitin ligases. Alternatively spliced transcript variants encoding distinct isoforms have been observed.

Synonyms:

COP9; CSN8; SGN8

Note:

Immunogen Sequence Homology: Dog: 100%; Pig: 100%; Rat: 100%; Horse: 100%; Human: 100%; Mouse: 100%; Bovine: 100%; Rabbit: 100%; Guinea pig: 100%

Product images:
COPS8


WB Suggested Anti-COPS8 Antibody Titration: 0.2-1 ug/ml; ELISA Titer: 1: 312500; Positive Control: HepG2 cell lysate
There is BioGPS gene expression data showing that COPS8 is expressed in HepG2



Sample Type: 1. B8 mouse fibroblast cells, extraction only; 2. HEK 293 cells, extraction only; 3. HEK 293 cells, purified; 4. Human Blood cells, partially pure; 5. Human Blood cells, pure; 6. S. pombe, extraction only; Primary Dilution: 1: 200; Secondary