

## Product datasheet for **TA340134**

### SUGT1 Rabbit Polyclonal Antibody

#### Product data:

Product Type:	Primary Antibodies
Applications:	WB
Recommended Dilution:	WB
Reactivity:	Human
Host:	Rabbit
Isotype:	IgG
Clonality:	Polyclonal
Immunogen:	The immunogen for anti-SUGT1 antibody: synthetic peptide directed towards the middle region of human SUGT1. Synthetic peptide located within the following region: YTRNWDKLVGGEIKKEEKNEKLEGDAALNRLFQQIYSDGSDEVKRAMNKSF
Formulation:	Liquid. Purified antibody supplied in 1x PBS buffer with 0.09% (w/v) sodium azide and 2% sucrose. <i>Note that this product is shipped as lyophilized powder to China customers.</i>
Concentration:	lot specific
Purification:	Affinity Purified
Conjugation:	Unconjugated
Storage:	Store at -20°C as received.
Stability:	Stable for 12 months from date of receipt.
Predicted Protein Size:	38 kDa
Gene Name:	SGT1 homolog, MIS12 kinetochore complex assembly cochaperone
Database Link:	<a href="#">NP_006695</a> <a href="#">Entrez Gene 10910 Human Q9Y2Z0</a>
Background:	This gene is homologous to the yeast gene SGT1, which encodes a protein involved in kinetochore function and required for the G1/S and G2/M transitions. Complementation studies suggest that the human protein has similar functions. Two transcript variants encoding different isoforms have been found for this gene.
Synonyms:	SGT1

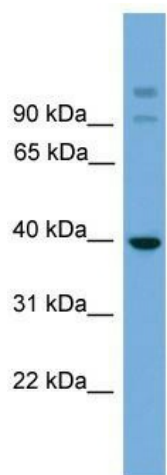


[View online »](#)

**Note:** Immunogen Sequence Homology: Dog: 100%; Pig: 100%; Rat: 100%; Horse: 100%; Human: 100%; Mouse: 100%; Sheep: 100%; Bovine: 100%; Rabbit: 100%; Guinea pig: 100%; Zebrafish: 86%

**Protein Pathways:** NOD-like receptor signaling pathway

**Product images:**



WB Suggested Anti-SUGT1 Antibody Titration: 0.2-1 ug/ml; ELISA Titer: 1: 312500; Positive Control: Human Liver