

Product datasheet for TA340133

C1qI1 Rabbit Polyclonal Antibody

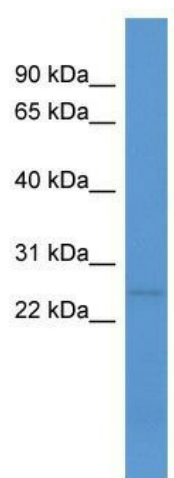
Product data:

Product Type:	Primary Antibodies
Applications:	WB
Recommended Dilution:	WB
Reactivity:	Mouse
Host:	Rabbit
Isotype:	IgG
Clonality:	Polyclonal
Immunogen:	The immunogen for anti-C1qI1 antibody: synthetic peptide corresponding to a region of Mouse. Synthetic peptide located within the following region: MLLVLVLPVLVSSGGPDGHYEMLGTCRMVCDPYPARGPGAGARSDGGD
Formulation:	Liquid. Purified antibody supplied in 1x PBS buffer with 0.09% (w/v) sodium azide and 2% sucrose. <i>Note that this product is shipped as lyophilized powder to China customers.</i>
Concentration:	lot specific
Purification:	Affinity Purified
Conjugation:	Unconjugated
Storage:	Store at -20°C as received.
Stability:	Stable for 12 months from date of receipt.
Predicted Protein Size:	28 kDa
Gene Name:	complement component 1, q subcomponent-like 1
Database Link:	NP_035925 Entrez Gene 23829 Mouse O88992
Background:	The function of C1qI1 remains unknown.
Synonyms:	C1QRF; CRF
Note:	Immunogen Sequence Homology: Dog: 100%; Pig: 100%; Rat: 100%; Human: 100%; Mouse: 100%; Bovine: 100%; Rabbit: 100%



[View online »](#)

Product images:



WB Suggested Anti-C1qI1 Antibody Titration: 0.2-1 ug/ml; ELISA Titer: 1: 12500; Positive Control: Mouse Spleen