

Product datasheet for TA340132

FGL2 Rabbit Polyclonal Antibody

Product data:

Product Type:	Primary Antibodies
Applications:	WB
Recommended Dilution:	WB
Reactivity:	Human
Host:	Rabbit
Isotype:	IgG
Clonality:	Polyclonal
Immunogen:	The immunogen for anti-FGL2 antibody: synthetic peptide directed towards the middle region of human FGL2. Synthetic peptide located within the following region: WTVLQARLDGSTNFTRTWQDYKAGFGNLRREFWLGNDKIHLLTKSKEMIL
Formulation:	Liquid. Purified antibody supplied in 1x PBS buffer with 0.09% (w/v) sodium azide and 2% sucrose.
Concentration:	lot specific
Purification:	Affinity Purified
Conjugation:	Unconjugated
Storage:	Store at -20°C as received.
Stability:	Stable for 12 months from date of receipt.
Predicted Protein Size:	48
Gene Name:	fibrinogen like 2
Database Link:	NP_006673 Entrez Gene 10875 Human Q14314
Background:	The protein encoded by this gene is a secreted protein that is similar to the beta- and gamma-chains of fibrinogen. The carboxyl-terminus of the encoded protein consists of the fibrinogen-related domains (FRED). The encoded protein forms a tetrameric complex which is stabilized by interchain disulfide bonds. This protein may play a role in physiologic functions at mucosal sites.
Synonyms:	pT49; T49

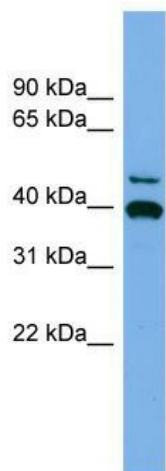


[View online »](#)

Note: Immunogen Sequence Homology: Dog: 100%; Pig: 100%; Rat: 100%; Horse: 100%; Human: 100%; Mouse: 100%; Bovine: 93%; Rabbit: 93%; Guinea pig: 93%

Protein Families: Druggable Genome, Secreted Protein

Product images:



WB Suggested Anti-FGL2 Antibody Titration: 0.2-1 ug/ml; Positive Control: Human Placenta