

Product datasheet for **TA340131**

C7orf16 (PPP1R17) Rabbit Polyclonal Antibody

Product data:

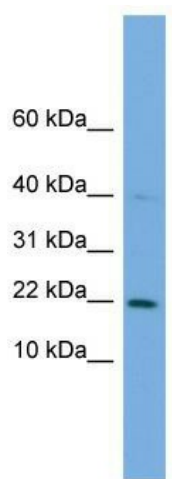
Product Type:	Primary Antibodies
Applications:	WB
Recommended Dilution:	WB
Reactivity:	Human
Host:	Rabbit
Isotype:	IgG
Clonality:	Polyclonal
Immunogen:	The immunogen for anti-C7orf16 antibody: synthetic peptide directed towards the middle region of human C7orf16. Synthetic peptide located within the following region: IKDCDLKKKPRKGKNVQATLNVESDQKKPRRKDTPALHIPPFPVGFSEH
Formulation:	Liquid. Purified antibody supplied in 1x PBS buffer with 0.09% (w/v) sodium azide and 2% sucrose. <i>Note that this product is shipped as lyophilized powder to China customers.</i>
Concentration:	lot specific
Purification:	Affinity Purified
Conjugation:	Unconjugated
Storage:	Store at -20°C as received.
Stability:	Stable for 12 months from date of receipt.
Predicted Protein Size:	18 kDa
Gene Name:	protein phosphatase 1 regulatory subunit 17
Database Link:	NP_006649 Entrez Gene 10842 Human O96001
Background:	The function of C7orf16 remains unknown.
Synonyms:	C7orf16; GSBS
Note:	Immunogen Sequence Homology: Pig: 100%; Rat: 100%; Human: 100%; Mouse: 100%; Dog: 92%; Horse: 92%; Bovine: 92%; Guinea pig: 92%; Rabbit: 85%



[View online »](#)

Protein Pathways: Long-term depression

Product images:



WB Suggested Anti-C7orf16 Antibody Titration:
0.2-1 ug/ml; ELISA Titer: 1: 1562500; Positive
Control: THP-1 cell lysate