

Product datasheet for **TA340129**

CPLX2 Rabbit Polyclonal Antibody

Product data:

Product Type:	Primary Antibodies
Applications:	WB
Recommended Dilution:	WB, IHC
Reactivity:	Human
Host:	Rabbit
Isotype:	IgG
Clonality:	Polyclonal
Immunogen:	The immunogen for anti-CPLX2 antibody: synthetic peptide directed towards the N terminal of human CPLX2. Synthetic peptide located within the following region: MDFVMKQALGGATKDMGKMLGGEEEKDPDAQKKEERQEALRQQEERKA
Formulation:	Liquid. Purified antibody supplied in 1x PBS buffer with 0.09% (w/v) sodium azide and 2% sucrose. <i>Note that this product is shipped as lyophilized powder to China customers.</i>
Concentration:	lot specific
Purification:	Affinity Purified
Conjugation:	Unconjugated
Storage:	Store at -20°C as received.
Stability:	Stable for 12 months from date of receipt.
Predicted Protein Size:	15
Gene Name:	complexin 2
Database Link:	NP_006641 Entrez Gene 10814 Human Q6PUV4
Background:	Proteins encoded by the complexin/synaphin gene family are cytosolic proteins that function in synaptic vesicle exocytosis. These proteins bind syntaxin, part of the SNAP receptor. The protein product of this gene binds to the SNAP receptor complex and disrupts it, allowing transmitter release. Two transcript variants encoding the same protein have been found for this gene.



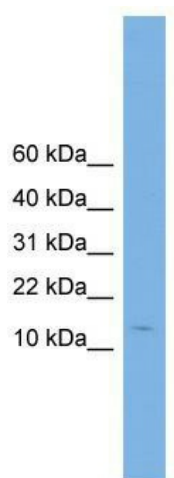
[View online »](#)

Synonyms: 921-L; CPX-2; CPX2; Hfb1

Note: Immunogen Sequence Homology: Dog: 100%; Pig: 100%; Rat: 100%; Horse: 100%; Human: 100%; Mouse: 100%; Bovine: 100%; Zebrafish: 100%; Guinea pig: 100%; Rabbit: 86%

Protein Families: Druggable Genome

Product images:



WB Suggested Anti-CPLX2 Antibody Titration: 0.2-1 ug/ml; Positive Control: Human Liver