

## Product datasheet for **TA340128**

### UTP14A Rabbit Polyclonal Antibody

#### Product data:

Product Type:	Primary Antibodies
Applications:	WB
Recommended Dilution:	WB
Reactivity:	Human
Host:	Rabbit
Isotype:	IgG
Clonality:	Polyclonal
Immunogen:	The immunogen for anti-UTP14A antibody: synthetic peptide directed towards the N terminal of human UTP14A. Synthetic peptide located within the following region: KWDPVVLKNRQAEQLVFPLEKEEPAIAPIEHVLSGWKARTPLEQEIFNLL
Formulation:	Liquid. Purified antibody supplied in 1x PBS buffer with 0.09% (w/v) sodium azide and 2% sucrose. <i>Note that this product is shipped as lyophilized powder to China customers.</i>
Concentration:	lot specific
Purification:	Affinity Purified
Conjugation:	Unconjugated
Storage:	Store at -20°C as received.
Stability:	Stable for 12 months from date of receipt.
Predicted Protein Size:	88
Gene Name:	UTP14A small subunit processome component
Database Link:	<a href="#">NP_006640</a> <a href="#">Entrez Gene 10813 Human</a> <a href="#">Q9BVJ6</a>
Background:	This gene encodes a member of the uridine triphosphate 14 family. As an essential component of a large ribonucleoprotein complex bound to the U3 small nucleolar RNA, the encoded protein is involved in ribosome biogenesis and 18S rRNA synthesis. An autosomal retrotransposed copy of this X-linked gene exists on chromosome 13. Alternative splicing results in multiple transcript variants.

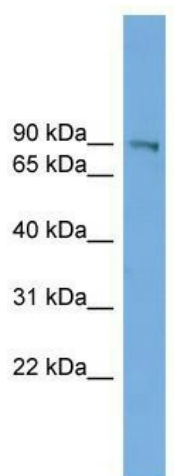


[View online »](#)

**Synonyms:** dj537K23.3; NYCO16; SDCCAG16

**Note:** Immunogen Sequence Homology: Rat: 100%; Human: 100%; Bovine: 100%; Pig: 93%; Horse: 93%; Mouse: 93%; Rabbit: 93%; Guinea pig: 93%; Dog: 79%

### Product images:



WB Suggested Anti-UTP14A Antibody Titration:  
0.2-1 ug/ml; Positive Control: HepG2 cell lysate