

## Product datasheet for **TA340126**

### WASF3 Rabbit Polyclonal Antibody

#### Product data:

Product Type:	Primary Antibodies
Applications:	WB
Recommended Dilution:	WB
Reactivity:	Human, Chicken, Turkey
Host:	Rabbit
Isotype:	IgG
Clonality:	Polyclonal
Immunogen:	The immunogen for anti-WASF3 antibody: synthetic peptide directed towards the N terminal of human WASF3. Synthetic peptide located within the following region: NMKKAFKSSTVQDQQVSKNSIPNPVADIYNQSDKPPPLNILTPYRDDKK
Formulation:	Liquid. Purified antibody supplied in 1x PBS buffer with 0.09% (w/v) sodium azide and 2% sucrose. <i>Note that this product is shipped as lyophilized powder to China customers.</i>
Concentration:	lot specific
Purification:	Affinity Purified
Conjugation:	Unconjugated
Storage:	Store at -20°C as received.
Stability:	Stable for 12 months from date of receipt.
Predicted Protein Size:	55 kDa
Gene Name:	WAS protein family member 3
Database Link:	<a href="#">NP_006637</a> <a href="#">Entrez Gene 10810 Human</a> <a href="#">Q9UPY6</a>



[View online »](#)

**Background:**

WASF3 is a member of the Wiskott-Aldrich syndrome protein family. It is a protein that forms a multiprotein complex that links receptor kinases and actin. Binding to actin occurs through a C-terminal verprolin homology domain in all family members. The multiprotein complex serves to transduce signals that involve changes in cell shape, motility or function. This gene encodes a member of the Wiskott-Aldrich syndrome protein family. The gene product is a protein that forms a multiprotein complex that links receptor kinases and actin. Binding to actin occurs through a C-terminal verprolin homology domain in all family members. The multiprotein complex serves to transduce signals that involve changes in cell shape, motility or function. Publication Note: This RefSeq record includes a subset of the publications that are available for this gene. Please see the Entrez Gene record to access additional publications.

**Synonyms:**

Brush-1; SCAR3; WAVE3

**Note:**

Immunogen Sequence Homology: Dog: 100%; Pig: 100%; Rat: 100%; Horse: 100%; Human: 100%; Mouse: 100%; Bovine: 100%; Rabbit: 100%; Guinea pig: 100%; Zebrafish: 77%

**Protein Families:**

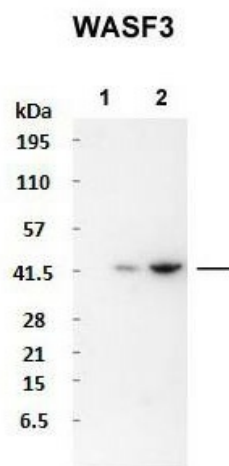
Druggable Genome

**Protein Pathways:**

Adherens junction, Fc gamma R-mediated phagocytosis

**Product images:**

WB Suggested Anti-WASF3 Antibody Titration:  
0.2-1 ug/ml; Positive Control: 721\_B cell lysate



Sample Type: 1. DF-1 cells (0.5x10<sup>6</sup> cells loaded);  
2. MSB-1 cells (0.5x10<sup>6</sup> cells loaded); Primary  
Dilution: 1: 1000; Secondary Antibody: Goat anti-  
rabbit IgG (whole molecule) peroxidase;  
Secondary Dilution: 1: 10,000; Image Submitted  
By: Yongxiu Yao; Ins