

## Product datasheet for **TA340125**

### Hsp105 (HSPH1) Rabbit Polyclonal Antibody

#### Product data:

Product Type:	Primary Antibodies
Applications:	WB
Recommended Dilution:	WB
Reactivity:	Human
Host:	Rabbit
Isotype:	IgG
Clonality:	Polyclonal
Immunogen:	The immunogen for anti-HSPH1 antibody: synthetic peptide directed towards the middle region of human HSPH1. Synthetic peptide located within the following region: EENEMSSEADMECLNQRPPENPDTDKNVQQDNSEAGTQPQVQTDAQQTSQ
Formulation:	Liquid. Purified antibody supplied in 1x PBS buffer with 0.09% (w/v) sodium azide and 2% sucrose. <i>Note that this product is shipped as lyophilized powder to China customers.</i>
Concentration:	lot specific
Purification:	Affinity Purified
Conjugation:	Unconjugated
Storage:	Store at -20°C as received.
Stability:	Stable for 12 months from date of receipt.
Predicted Protein Size:	97 kDa
Gene Name:	heat shock protein family H (Hsp110) member 1
Database Link:	<a href="#">NP_006635</a> <a href="#">Entrez Gene 10808 Human Q92598</a>
Background:	HSPH1 prevents the aggregation of denatured proteins in cells under severe stress, on which the ATP levels decrease markedly. It inhibits HSPA8/HSC70 ATPase and chaperone activities.
Synonyms:	HSP105; HSP105A; HSP105B; NY-CO-25



[View online »](#)

**Note:** Immunogen Sequence Homology: Dog: 100%; Pig: 100%; Rat: 100%; Horse: 100%; Human: 100%; Mouse: 100%; Rabbit: 100%; Guinea pig: 100%; Bovine: 93%

**Protein Families:** Stem cell - Pluripotency

**Product images:**



WB Suggested Anti-HSPH1 Antibody Titration: 0.2-1 ug/ml; ELISA Titer: 1: 62500; Positive Control: 293T cell lysate

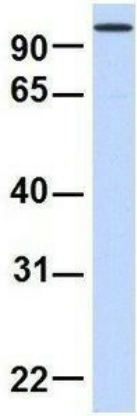
**HSPH1**



Rabbit Anti-HSPH1  
Sample Type: Human MCF7  
Antibody Concentration: 1ug/mL

Host: Rabbit; Target Name: HSPH1; Sample Tissue: Human MCF7; Antibody Dilution: 1.0 ug/ml; HSPH1 is strongly supported by BioGPS gene expression data to be expressed in MCF7

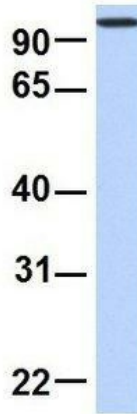
## HSPH1



Rabbit Anti-HSPH1  
Sample Type: Human Fetal Brain  
Antibody Concentration: 1ug/mL

Host: Rabbit; Target Name: HSPH1; Sample Tissue: Human 721\_B; Antibody Dilution: 1.0 ug/ml; HSPH1 is strongly supported by BioGPS gene expression data to be expressed in Human 721\_B cells

## HSPH1



Rabbit Anti-HSPH1  
Sample Type: Human 721\_B  
Antibody Concentration: 1ug/mL

Host: Rabbit; Target Name: HSPH1; Sample Tissue: Human Fetal Brain; Antibody Dilution: 1.0 ug/ml