

Product datasheet for **TA340123**

SDCCAG8 Rabbit Polyclonal Antibody

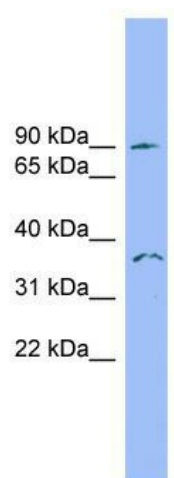
Product data:

Product Type:	Primary Antibodies
Applications:	WB
Recommended Dilution:	WB
Reactivity:	Human
Host:	Rabbit
Isotype:	IgG
Clonality:	Polyclonal
Immunogen:	The immunogen for anti-SDCCAG8 antibody: synthetic peptide directed towards the N terminal of human SDCCAG8. Synthetic peptide located within the following region: HEETNMPTMHDLVHTINDQSQYIHHLEAEVKFCKEELSGMKNKIQVVLE
Formulation:	Liquid. Purified antibody supplied in 1x PBS buffer with 0.09% (w/v) sodium azide and 2% sucrose.
Concentration:	lot specific
Purification:	Affinity Purified
Conjugation:	Unconjugated
Storage:	Store at -20°C as received.
Stability:	Stable for 12 months from date of receipt.
Predicted Protein Size:	83 kDa
Gene Name:	serologically defined colon cancer antigen 8
Database Link:	NP_006633 Entrez Gene 10806 Human Q86SQ7
Background:	The exact function of SDCCAG8 remains unknown.
Synonyms:	BBS16; CCCAP; CCCAP SLSN7; hCCCAP; HSPC085; NPHP10; NY-CO-8; SLSN7
Note:	Immunogen Sequence Homology: Dog: 100%; Pig: 100%; Rat: 100%; Horse: 100%; Human: 100%; Mouse: 100%; Rabbit: 100%; Guinea pig: 100%; Bovine: 93%; Zebrafish: 79%



[View online »](#)

Product images:



WB Suggested Anti-SDCCAG8 Antibody Titration:
0.2-1 ug/ml; ELISA Titer: 1: 62500; Positive
Control: THP-1 cell lysate