

## Product datasheet for TA340122

### HBS1L Rabbit Polyclonal Antibody

#### Product data:

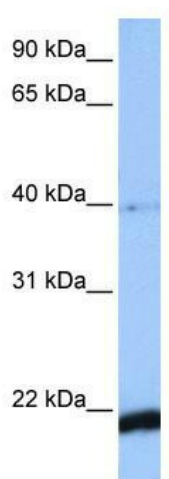
Product Type:	Primary Antibodies
Applications:	WB
Recommended Dilution:	WB
Reactivity:	Human
Host:	Rabbit
Isotype:	IgG
Clonality:	Polyclonal
Immunogen:	The immunogen for anti-HBS1L antibody: synthetic peptide directed towards the C terminal of human HBS1L. Synthetic peptide located within the following region: MNHKILVCFADQGSFGCITGKIEAGYIQTGDRLAMPNETCTVKGITLH
Formulation:	Liquid. Purified antibody supplied in 1x PBS buffer with 0.09% (w/v) sodium azide and 2% sucrose.
Concentration:	lot specific
Purification:	Affinity Purified
Conjugation:	Unconjugated
Storage:	Store at -20°C as received.
Stability:	Stable for 12 months from date of receipt.
Predicted Protein Size:	22 kDa
Gene Name:	HBS1 like translational GTPase
Database Link:	<a href="#">NP_001138630</a> <a href="#">Entrez Gene 10767 Human</a> <a href="#">Q9Y450</a>
Background:	HBS1L belongs to the GTP-binding elongation factor family. The HBS1L-MYB intergenic region on chromosome 6q23.3 influences erythrocyte, platelet, and monocyte counts. HBS1L-related genetic variants play a key role in control of fetal hemoglobin levels.
Synonyms:	EF-1a; eRF3c; ERF5; HBS1; HSPC276



[View online »](#)

**Note:** Immunogen Sequence Homology: Dog: 100%; Rat: 100%; Horse: 100%; Human: 100%; Mouse: 100%; Bovine: 100%; Rabbit: 100%; Zebrafish: 100%; Pig: 93%; Guinea pig: 93%

**Product images:**



WB Suggested Anti-HBS1L Antibody Titration: 0.2-1 ug/ml; Positive Control: MCF7 cell lysate