

Product datasheet for **TA340120**

RFPL2 Rabbit Polyclonal Antibody

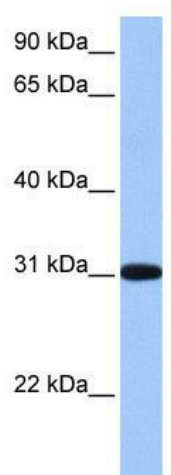
Product data:

Product Type:	Primary Antibodies
Applications:	WB
Recommended Dilution:	WB
Reactivity:	Human
Host:	Rabbit
Isotype:	IgG
Clonality:	Polyclonal
Immunogen:	The immunogen for anti-RFPL2 antibody: synthetic peptide directed towards the C terminal of human RFPL2. Synthetic peptide located within the following region: VSFFDAESGSHVYTFRSVSAEEPLRPFLAPSVPPNGDQGVLSICPLMNSG
Formulation:	Liquid. Purified antibody supplied in 1x PBS buffer with 0.09% (w/v) sodium azide and 2% sucrose.
Concentration:	lot specific
Purification:	Affinity Purified
Conjugation:	Unconjugated
Storage:	Store at -20°C as received.
Stability:	Stable for 12 months from date of receipt.
Predicted Protein Size:	32 kDa
Gene Name:	ret finger protein like 2
Database Link:	NP_001091997 Entrez Gene 10739 Human O75678
Background:	RFPL2 contains 1 B30.2/SPRY domain and 1 RING-type zinc finger. The human RFPL2 gene has a role in neocortex development.
Synonyms:	RNF79
Note:	Immunogen Sequence Homology: Human: 100%; Rabbit: 85%
Protein Families:	Druggable Genome



[View online »](#)

Product images:



WB Suggested Anti-RFPL2 Antibody Titration: 0.2-1 ug/ml; Positive Control: Human Liver