

Product datasheet for **TA340119**

NUDC Rabbit Polyclonal Antibody

Product data:

Product Type:	Primary Antibodies
Applications:	WB
Recommended Dilution:	WB, IHC
Reactivity:	Human
Host:	Rabbit
Isotype:	IgG
Clonality:	Polyclonal
Immunogen:	The immunogen for anti-NUDC antibody: synthetic peptide directed towards the middle region of human NUDC. Synthetic peptide located within the following region: DAENHEAQLKNGSLDSPGKQDTEEDEEEDKDKGKLPNLGNGADLPNYR
Formulation:	Liquid. Purified antibody supplied in 1x PBS buffer with 0.09% (w/v) sodium azide and 2% sucrose. <i>Note that this product is shipped as lyophilized powder to China customers.</i>
Concentration:	lot specific
Purification:	Affinity Purified
Conjugation:	Unconjugated
Storage:	Store at -20°C as received.
Stability:	Stable for 12 months from date of receipt.
Predicted Protein Size:	38 kDa
Gene Name:	nudC nuclear distribution protein
Database Link:	NP_006591 Entrez Gene 10726 Human Q9Y266



[View online »](#)

Background:

NudC was first identified as a regulator of nuclear movement in the asexual reproductive cycle of the filamentous fungus *Aspergillus nidulans*. Human NUDC is a nuclear movement protein that associates with dynein. NudC was first identified as a regulator of nuclear movement in the asexual reproductive cycle of the filamentous fungus *Aspergillus nidulans*. Human NUDC is a nuclear movement protein that associates with dynein (see DYNC1H1; MIM 600112) (Aumais et al., 2003 [PubMed 12679384]). [supplied by OMIM]. Publication Note: This RefSeq record includes a subset of the publications that are available for this gene. Please see the Entrez Gene record to access additional publications.

Synonyms:

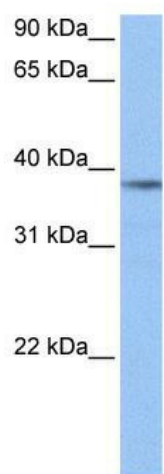
HNUDC; MNUDC; NPD011

Note:

Immunogen Sequence Homology: Dog: 100%; Pig: 100%; Rat: 100%; Horse: 100%; Human: 100%; Mouse: 100%; Rabbit: 100%; Bovine: 93%; Zebrafish: 85%; Guinea pig: 82%

Product images:





WB Suggested Anti-NUDC Antibody Titration: 0.2-1 ug/ml; Positive Control: HepG2 cell lysate. NUDC is strongly supported by BioGPS gene expression data to be expressed in Human HepG2 cells