

Product datasheet for **TA340118**

EXOC5 Rabbit Polyclonal Antibody

Product data:

Product Type:	Primary Antibodies
Applications:	WB
Recommended Dilution:	WB
Reactivity:	Human
Host:	Rabbit
Isotype:	IgG
Clonality:	Polyclonal
Immunogen:	The immunogen for anti-EXOC5 antibody: synthetic peptide directed towards the N terminal of human EXOC5. Synthetic peptide located within the following region: ATKVCHLGDQLEGVNTPRQRAVEAQKLMKYFNEFLDGELKSDVFTNSEKI
Formulation:	Liquid. Purified antibody supplied in 1x PBS buffer with 0.09% (w/v) sodium azide and 2% sucrose.
Concentration:	lot specific
Purification:	Affinity Purified
Conjugation:	Unconjugated
Storage:	Store at -20°C as received.
Stability:	Stable for 12 months from date of receipt.
Predicted Protein Size:	82 kDa
Gene Name:	exocyst complex component 5
Database Link:	NP_006535 Entrez Gene 10640 Human O00471



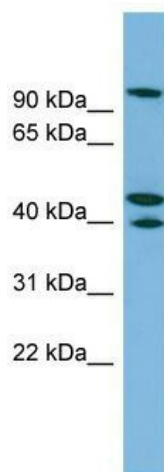
[View online »](#)

Background: The protein encoded by this gene is a component of the exocyst complex, a multiple protein complex essential for targeting exocytic vesicles to specific docking sites on the plasma membrane. Though best characterized in yeast, the component proteins and functions of exocyst complex have been demonstrated to be highly conserved in higher eukaryotes. At least eight components of the exocyst complex, including this protein, are found to interact with the actin cytoskeletal remodeling and vesicle transport machinery. The complex is also essential for the biogenesis of epithelial cell surface polarity.

Synonyms: HSEC10; PRO1912; SEC10; SEC10L1; SEC10P

Note: Immunogen Sequence Homology: Dog: 100%; Pig: 100%; Rat: 100%; Horse: 100%; Human: 100%; Mouse: 100%; Bovine: 100%; Rabbit: 100%; Zebrafish: 100%; Guinea pig: 100%

Product images:



WB Suggested Anti-EXOC5 Antibody Titration: 0.2-1 ug/ml; ELISA Titer: 1: 62500; Positive Control: A549 cell lysate