

Product datasheet for **TA340117**

GAS2L1 Rabbit Polyclonal Antibody

Product data:

Product Type:	Primary Antibodies
Applications:	WB
Recommended Dilution:	WB, IHC
Reactivity:	Human
Host:	Rabbit
Isotype:	IgG
Clonality:	Polyclonal
Immunogen:	The immunogen for anti-GAS2L1 antibody: synthetic peptide directed towards the middle region of human GAS2L1. Synthetic peptide located within the following region: ARSQSREEQAVLLVRRDRDGQHSWVPRGRGSGGSGRSTPQTPRARSPAAP
Formulation:	Liquid. Purified antibody supplied in 1x PBS buffer with 0.09% (w/v) sodium azide and 2% sucrose. <i>Note that this product is shipped as lyophilized powder to China customers.</i>
Concentration:	lot specific
Purification:	Affinity Purified
Conjugation:	Unconjugated
Storage:	Store at -20°C as received.
Stability:	Stable for 12 months from date of receipt.
Predicted Protein Size:	73 kDa
Gene Name:	growth arrest specific 2 like 1
Database Link:	NP_006469 Entrez Gene 10634 Human Q99501



[View online »](#)

Background:

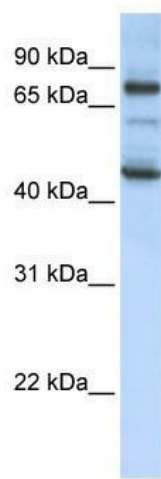
GAS2L1, a member of the GAS2 family, is similar in sequence to the mouse protein Gas2, an actin-associated protein expressed at high levels in growth-arrested cells. Expression of the mouse Gas2 gene is negatively regulated by serum and growth factors. Three transcript variants encoding two different isoforms have been found for this gene. The protein encoded by this gene, a member of the GAS2 family, is similar in sequence to the mouse protein Gas2, an actin-associated protein expressed at high levels in growth-arrested cells. Expression of the mouse Gas2 gene is negatively regulated by serum and growth factors. Three transcript variants encoding two different isoforms have been found for this gene.

Synonyms:

GAR22

Note:

Immunogen Sequence Homology: Human: 100%; Mouse: 100%; Rat: 93%; Dog: 92%; Pig: 86%; Bovine: 86%

Product images:

WB Suggested Anti-GAS2L1 Antibody Titration:
0.2-1 ug/ml; ELISA Titer: 1: 62500; Positive
Control: MCF7 cell lysate