

## Product datasheet for **TA340116**

### RASL10A Rabbit Polyclonal Antibody

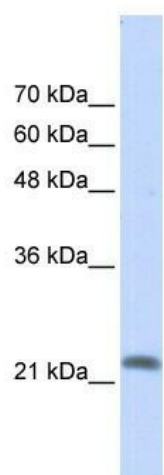
#### Product data:

Product Type:	Primary Antibodies
Applications:	WB
Recommended Dilution:	WB
Reactivity:	Human
Host:	Rabbit
Isotype:	IgG
Clonality:	Polyclonal
Immunogen:	The immunogen for anti-RASL10A antibody: synthetic peptide directed towards the N terminal of human RASL10A. Synthetic peptide located within the following region: PTDGPRLYRPAVLLDGAVYDLSIRDGDVAGPGSSPGGPEEWPDAKDWSLQ
Formulation:	Liquid. Purified antibody supplied in 1x PBS buffer with 0.09% (w/v) sodium azide and 2% sucrose. <i>Note that this product is shipped as lyophilized powder to China customers.</i>
Concentration:	lot specific
Purification:	Affinity Purified
Conjugation:	Unconjugated
Storage:	Store at -20°C as received.
Stability:	Stable for 12 months from date of receipt.
Predicted Protein Size:	22 kDa
Gene Name:	RAS like family 10 member A
Database Link:	<a href="#">NP_006468</a> <a href="#">Entrez Gene 10633 Human</a> <a href="#">Q92737</a>
Background:	The specific function of RASL10A is not yet known.
Synonyms:	RRP22
Note:	Immunogen Sequence Homology: Human: 100%; Horse: 86%



[View online »](#)

## Product images:



WB Suggested Anti-RASL10A Antibody Titration:  
0.2-1 ug/ml; ELISA Titer: 1: 62500; Positive  
Control: Transfected 293T