

## Product datasheet for **TA340112**

### MTHFS Rabbit Polyclonal Antibody

#### Product data:

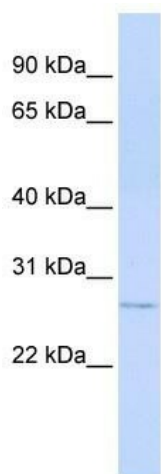
Product Type:	Primary Antibodies
Applications:	WB
Recommended Dilution:	WB
Reactivity:	Human
Host:	Rabbit
Isotype:	IgG
Clonality:	Polyclonal
Immunogen:	The immunogen for anti-MTHFS antibody: synthetic peptide directed towards the middle region of human MTHFS. Synthetic peptide located within the following region: TSWNIPQPEGDVREEALSTGGDLIFMPGLGFDKHNRLGRGKGYDAY
Formulation:	Liquid. Purified antibody supplied in 1x PBS buffer with 0.09% (w/v) sodium azide and 2% sucrose. <i>Note that this product is shipped as lyophilized powder to China customers.</i>
Concentration:	lot specific
Purification:	Affinity Purified
Conjugation:	Unconjugated
Storage:	Store at -20°C as received.
Stability:	Stable for 12 months from date of receipt.
Predicted Protein Size:	23 kDa
Gene Name:	5,10-methenyltetrahydrofolate synthetase (5-formyltetrahydrofolate cyclo-ligase)
Database Link:	<a href="#">NP_006432</a> <a href="#">Entrez Gene 10588 Human P49914</a>
Background:	The exact function of MTHFS remains unknown.
Synonyms:	HsT19268
Note:	Immunogen Sequence Homology: Rat: 100%; Human: 100%; Mouse: 100%; Dog: 86%; Pig: 86%; Horse: 86%; Guinea pig: 86%; Bovine: 79%



[View online »](#)

Protein Pathways: Metabolic pathways, One carbon pool by folate

### Product images:



WB Suggested Anti-MTHFS Antibody Titration:  
0.2-1 ug/ml; ELISA Titer: 1: 312500; Positive  
Control: Transfected 293T