

## Product datasheet for **TA340107**

### PHAPI2 / APRIL (ANP32B) Rabbit Polyclonal Antibody

#### Product data:

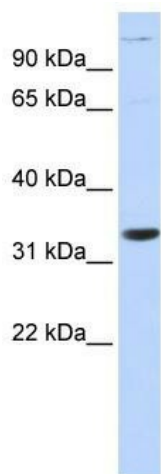
Product Type:	Primary Antibodies
Applications:	WB
Recommended Dilution:	WB
Reactivity:	Human
Host:	Rabbit
Isotype:	IgG
Clonality:	Polyclonal
Immunogen:	The immunogen for anti-ANP32B antibody: synthetic peptide directed towards the N terminal of human ANP32B. Synthetic peptide located within the following region: GLTAEFVNLEFLSLINVGLISVSNLPKLPKPKKLELSENRIFGGDMLAE
Formulation:	Liquid. Purified antibody supplied in 1x PBS buffer with 0.09% (w/v) sodium azide and 2% sucrose. <i>Note that this product is shipped as lyophilized powder to China customers.</i>
Concentration:	lot specific
Purification:	Affinity Purified
Conjugation:	Unconjugated
Storage:	Store at -20°C as received.
Stability:	Stable for 12 months from date of receipt.
Predicted Protein Size:	29 kDa
Gene Name:	acidic nuclear phosphoprotein 32 family member B
Database Link:	<a href="#">NP_006392</a> <a href="#">Entrez Gene 10541 Human Q92688</a>
Background:	ANP32B is a multifunctional protein working as a cell cycle progression factor as well as a cell survival factor. ANP32B is required for the progression from the G1 to the S phase. ANP32B is an anti-apoptotic protein which functions as a caspase-3 inhibitor. It has no phosphatase 2A (PP2A) inhibitor activity.
Synonyms:	APRIL; PHAPI2; SSP29



[View online »](#)

**Note:** Immunogen Sequence Homology: Dog: 100%; Pig: 100%; Rat: 100%; Horse: 100%; Human: 100%; Sheep: 100%; Bovine: 100%; Rabbit: 100%; Guinea pig: 100%; Mouse: 93%; Zebrafish: 93%

**Product images:**



WB Suggested Anti-ANP32B Antibody Titration:  
0.2-1 ug/ml; ELISA Titer: 1: 12500; Positive  
Control: Human Muscle