

## Product datasheet for **TA340102**

### TIMM44 Rabbit Polyclonal Antibody

#### Product data:

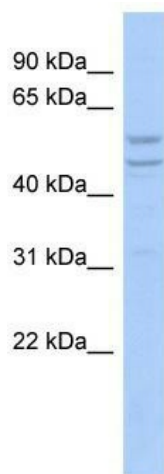
Product Type:	Primary Antibodies
Applications:	WB
Recommended Dilution:	WB
Reactivity:	Human
Host:	Rabbit
Isotype:	IgG
Clonality:	Polyclonal
Immunogen:	The immunogen for anti-TIMM44 antibody: synthetic peptide directed towards the N terminal of human TIMM44. Synthetic peptide located within the following region: MAAAALRSGWCRCPRRCLGSGIQFLSSHNLPHGSTYQMRRPGGELPLSKS
Formulation:	Liquid. Purified antibody supplied in 1x PBS buffer with 0.09% (w/v) sodium azide and 2% sucrose. <i>Note that this product is shipped as lyophilized powder to China customers.</i>
Concentration:	lot specific
Purification:	Affinity Purified
Conjugation:	Unconjugated
Storage:	Store at -20°C as received.
Stability:	Stable for 12 months from date of receipt.
Predicted Protein Size:	51 kDa
Gene Name:	translocase of inner mitochondrial membrane 44
Database Link:	<a href="#">NP_006342</a> <a href="#">Entrez Gene 10469 Human</a> <a href="#">O43615</a>
Background:	TIMM44 is the essential component of the PAM complex, a complex required for the translocation of transit peptide-containing proteins from the inner membrane into the mitochondrial matrix in an ATP-dependent manner. It recruits mitochondrial HSP70 to driv
Synonyms:	TIM44



[View online »](#)

**Note:** Immunogen Sequence Homology: Human: 100%; Mouse: 100%; Rat: 92%; Pig: 79%; Guinea pig: 79%; Dog: 75%

**Product images:**



WB Suggested Anti-TIMM44 Antibody Titration:  
0.2-1 ug/ml; ELISA Titer: 1: 1562500; Positive  
Control: OVCAR-3 cell lysate