

Product datasheet for **TA340101**

PPIH Rabbit Polyclonal Antibody

Product data:

Product Type:	Primary Antibodies
Applications:	WB
Recommended Dilution:	WB
Reactivity:	Human
Host:	Rabbit
Isotype:	IgG
Clonality:	Polyclonal
Immunogen:	The immunogen for anti-PPIH antibody: synthetic peptide directed towards the middle region of human PPIH. Synthetic peptide located within the following region: DFMIQGGDFVNGDGTGVASIYRGPFADENFKLRHSAPGLLSMANS GPSTN
Formulation:	Liquid. Purified antibody supplied in 1x PBS buffer with 0.09% (w/v) sodium azide and 2% sucrose. <i>Note that this product is shipped as lyophilized powder to China customers.</i>
Concentration:	lot specific
Purification:	Affinity Purified
Conjugation:	Unconjugated
Storage:	Store at -20°C as received.
Stability:	Stable for 12 months from date of receipt.
Predicted Protein Size:	19
Gene Name:	peptidylprolyl isomerase H
Database Link:	NP_006338 Entrez Gene 10465 Human O43447



[View online »](#)

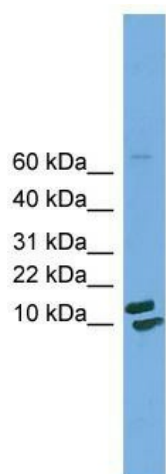
Background: The protein encoded by this gene is a member of the peptidyl-prolyl cis-trans isomerase (PPIase) family. PPIases catalyze the cis-trans isomerization of proline imidic peptide bonds in oligopeptides and accelerate the folding of proteins. This protein is a specific component of the complex that includes pre-mRNA processing factors PRPF3, PRPF4, and PRPF18, as well as U4/U5/U6 tri-snRNP. This protein has been shown to possess PPIase activity and may act as a protein chaperone that mediates the interactions between different proteins inside the spliceosome.

Synonyms: CYP-20; CYPH; SnuCyp-20; USA-CYP

Note: Immunogen Sequence Homology: Dog: 100%; Pig: 100%; Rat: 100%; Horse: 100%; Human: 100%; Mouse: 100%; Yeast: 100%; Bovine: 100%; Rabbit: 100%; Guinea pig: 100%; Goat: 90%; Zebrafish: 90%

Protein Pathways: Spliceosome

Product images:



WB Suggested Anti-PPIH Antibody Titration: 0.2-1 ug/ml; Positive Control: HepG2 cell lysate PPIH is supported by BioGPS gene expression data to be expressed in HepG2