

## Product datasheet for **TA340099**

### **C13orf24 (PIBF1) Rabbit Polyclonal Antibody**

#### **Product data:**

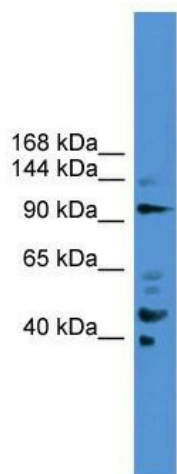
Product Type:	Primary Antibodies
Applications:	WB
Recommended Dilution:	WB
Reactivity:	Human
Host:	Rabbit
Isotype:	IgG
Clonality:	Polyclonal
Immunogen:	The immunogen for anti-PIBF1 antibody: synthetic peptide directed towards the C terminal of human PIBF1. Synthetic peptide located within the following region: RKDQVTQLSQELDRANSLLNQTQQPYRYLIESVRQRDSKIDSLTESIAQL
Formulation:	Liquid. Purified antibody supplied in 1x PBS buffer with 0.09% (w/v) sodium azide and 2% sucrose. <i>Note that this product is shipped as lyophilized powder to China customers.</i>
Concentration:	lot specific
Purification:	Affinity Purified
Conjugation:	Unconjugated
Storage:	Store at -20°C as received.
Stability:	Stable for 12 months from date of receipt.
Predicted Protein Size:	90 kDa
Gene Name:	progesterone immunomodulatory binding factor 1
Database Link:	<a href="#">NP_006337</a> <a href="#">Entrez Gene 10464 Human</a> <a href="#">Q8WXW3</a>
Background:	PIBF1 is the mediator of progesterone that by acting on the phospholipase A2 enzyme interferes with arachidonic acid metabolism, induces a Th2 biased immune response, and by controlling NK activity exerts an anti-abortive effect.
Synonyms:	C13orf24; CEP90; PIBF



[View online »](#)

**Note:** Immunogen Sequence Homology: Dog: 100%; Horse: 100%; Human: 100%; Mouse: 100%; Bovine: 100%; Pig: 93%; Rat: 93%; Rabbit: 93%; Guinea pig: 93%

### Product images:



WB Suggested Anti-PIBF1 Antibody Titration: 0.2-1 ug/ml; ELISA Titer: 1: 1562500; Positive Control: 293T cell lysate. PIBF1 is supported by BioGPS gene expression data to be expressed in HEK293T