

Product datasheet for **TA340098**

Lysophospholipase 1 (LYPLA1) Rabbit Polyclonal Antibody

Product data:

Product Type:	Primary Antibodies
Applications:	WB
Recommended Dilution:	WB
Reactivity:	Human
Host:	Rabbit
Isotype:	IgG
Clonality:	Polyclonal
Immunogen:	The immunogen for anti-LYPLA1 antibody: synthetic peptide directed towards the middle region of human LYPLA1. Synthetic peptide located within the following region: SWFDIIGLSPDSQEDESIGKQAAENIKALIDQEVKNGIPSNRIILGGFSQ
Formulation:	Liquid. Purified antibody supplied in 1x PBS buffer with 0.09% (w/v) sodium azide and 2% sucrose. <i>Note that this product is shipped as lyophilized powder to China customers.</i>
Concentration:	lot specific
Purification:	Affinity Purified
Conjugation:	Unconjugated
Storage:	Store at -20°C as received.
Stability:	Stable for 12 months from date of receipt.
Predicted Protein Size:	25 kDa
Gene Name:	lysophospholipase I
Database Link:	NP_006321 Entrez Gene 10434 Human O75608



[View online »](#)

Background:

Lysophospholipases are enzymes that act on biological membranes to regulate the multifunctional lysophospholipids. LYPLA1 hydrolyzes lysophosphatidylcholine in both monomeric and micellar forms. The use of alternate polyadenylation sites has been found for this gene. Lysophospholipases are enzymes that act on biological membranes to regulate the multifunctional lysophospholipids. The protein encoded by this gene hydrolyzes lysophosphatidylcholine in both monomeric and micellar forms. The use of alternate polyadenylation sites has been found for this gene. There are alternatively spliced transcript variants described for this gene but the full length nature is not known yet.

Synonyms:

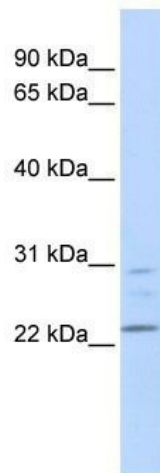
APT-1; APT1; hAPT1; LPL-I; LPL1

Note:

Immunogen Sequence Homology: Pig: 100%; Rat: 100%; Human: 100%; Mouse: 100%; Bovine: 100%; Rabbit: 100%; Guinea pig: 100%; Dog: 93%; Zebrafish: 93%; Horse: 86%; Yeast: 79%

Protein Pathways:

Glycerophospholipid metabolism

Product images:

WB Suggested Anti-LYPLA1 Antibody Titration:
0.2-1 ug/ml; ELISA Titer: 1: 312500; Positive
Control: CCRF-CEM cell lysate