

## Product datasheet for **TA340096**

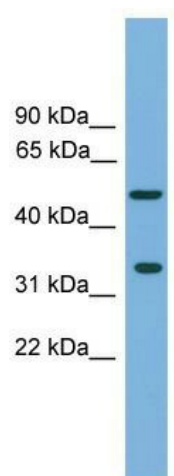
### CFDP1 Rabbit Polyclonal Antibody

#### Product data:

Product Type:	Primary Antibodies
Applications:	WB
Recommended Dilution:	WB
Reactivity:	Human
Host:	Rabbit
Isotype:	IgG
Clonality:	Polyclonal
Immunogen:	The immunogen for anti-CFDP1 antibody: synthetic peptide directed towards the middle region of human CFDP1. Synthetic peptide located within the following region: GSGLKRSSGMSSLLGKIGAKKQKMSTLEKSKLDWESFKEEEGIGEELAIH
Formulation:	Liquid. Purified antibody supplied in 1x PBS buffer with 0.09% (w/v) sodium azide and 2% sucrose. <i>Note that this product is shipped as lyophilized powder to China customers.</i>
Concentration:	lot specific
Purification:	Affinity Purified
Conjugation:	Unconjugated
Storage:	Store at -20°C as received.
Stability:	Stable for 12 months from date of receipt.
Predicted Protein Size:	33 kDa
Gene Name:	craniofacial development protein 1
Database Link:	<a href="#">NP_006315</a> <a href="#">Entrez Gene 10428 Human</a> <a href="#">Q9UEE9</a>
Background:	CFDP1 may play a role during embryogenesis.
Synonyms:	BCNT; BUCENTAUR; CENP-29; CP27; p97; SWC5; Yeti
Note:	Immunogen Sequence Homology: Pig: 100%; Rat: 100%; Goat: 100%; Horse: 100%; Human: 100%; Mouse: 100%; Bovine: 100%; Rabbit: 100%; Guinea pig: 100%; Dog: 93%



[View online »](#)

**Product images:**

WB Suggested Anti-CFDP1 Antibody Titration: 0.2-1 ug/ml; ELISA Titer: 1: 62500; Positive Control: NCI-H226 cell lysate. CFDP1 is supported by BioGPS gene expression data to be expressed in NCIH226