

Product datasheet for **TA340093**

Epac1 (RAPGEF3) Rabbit Polyclonal Antibody

Product data:

Product Type:	Primary Antibodies
Applications:	WB
Recommended Dilution:	WB
Reactivity:	Human
Host:	Rabbit
Isotype:	IgG
Clonality:	Polyclonal
Immunogen:	The immunogen for anti-RAPGEF3 antibody: synthetic peptide directed towards the middle region of human RAPGEF3. Synthetic peptide located within the following region: HGKWLVLERASQGAGPSRPPTPGRNRYTVMSGTPEKILELLEAMGPDS
Formulation:	Liquid. Purified antibody supplied in 1x PBS buffer with 0.09% (w/v) sodium azide and 2% sucrose. <i>Note that this product is shipped as lyophilized powder to China customers.</i>
Concentration:	lot specific
Purification:	Affinity Purified
Conjugation:	Unconjugated
Storage:	Store at -20°C as received.
Stability:	Stable for 12 months from date of receipt.
Predicted Protein Size:	104 kDa
Gene Name:	Rap guanine nucleotide exchange factor 3
Database Link:	NP_001092001 Entrez Gene 10411 Human O95398
Background:	The function of the protein remains unknown.
Synonyms:	bcm910; CAMP-GEFI; EPAC; EPAC1; HSU79275
Note:	Immunogen Sequence Homology: Dog: 100%; Rat: 100%; Horse: 100%; Human: 100%; Mouse: 100%; Pig: 93%; Bovine: 93%; Guinea pig: 92%; Rabbit: 85%

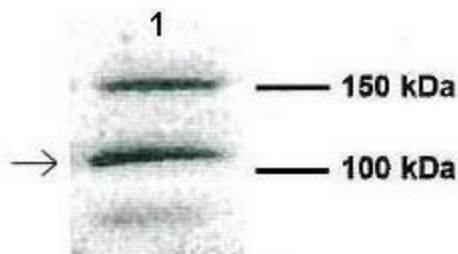


[View online »](#)

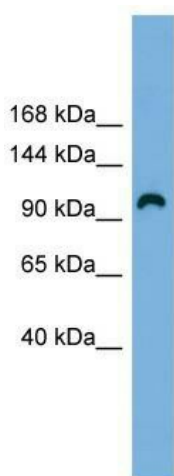
Protein Pathways: Leukocyte transendothelial migration, Long-term potentiation

Product images:

RAPGEF3



Human CFBE



WB Suggested Anti-RAPGEF3 Antibody Titration:
0.2-1 ug/ml; ELISA Titer: 1: 1562500; Positive
Control: HCT15 cell lysate