

## Product datasheet for **TA340092**

### Epac1 (RAPGEF3) Rabbit Polyclonal Antibody

#### Product data:

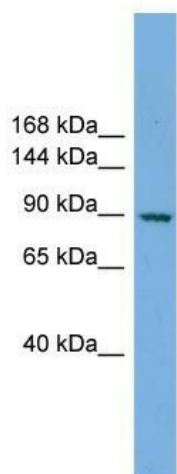
Product Type:	Primary Antibodies
Applications:	WB
Recommended Dilution:	WB
Reactivity:	Human
Host:	Rabbit
Isotype:	IgG
Clonality:	Polyclonal
Immunogen:	The immunogen for anti-RAPGEF3 antibody: synthetic peptide directed towards the N terminal of human RAPGEF3. Synthetic peptide located within the following region: RSQVVGICQVLLDEGALCHVKHDWAFQDRDAQFYRFPGPPEPEPVGTHEME
Formulation:	Liquid. Purified antibody supplied in 1x PBS buffer with 0.09% (w/v) sodium azide and 2% sucrose. <i>Note that this product is shipped as lyophilized powder to China customers.</i>
Concentration:	lot specific
Purification:	Affinity Purified
Conjugation:	Unconjugated
Storage:	Store at -20°C as received.
Stability:	Stable for 12 months from date of receipt.
Predicted Protein Size:	99 kDa
Gene Name:	Rap guanine nucleotide exchange factor 3
Database Link:	<a href="#">NP_006096</a> <a href="#">Entrez Gene 10411 Human O95398</a>
Background:	The function of the protein remains unknown.
Synonyms:	bcm910; CAMP-GEFI; EPAC; EPAC1; HSU79275
Note:	Immunogen Sequence Homology: Rat: 100%; Human: 100%; Mouse: 100%; Rabbit: 100%; Dog: 93%; Pig: 93%; Horse: 93%; Bovine: 93%; Guinea pig: 93%



[View online »](#)

Protein Pathways: Leukocyte transendothelial migration, Long-term potentiation

### Product images:



WB Suggested Anti-RAPGEF3 Antibody Titration:  
0.2-1 ug/ml; ELISA Titer: 1: 1562500; Positive  
Control: COLO205 cell lysate