

Product datasheet for **TA340091**

DLC1 Rabbit Polyclonal Antibody

Product data:

Product Type:	Primary Antibodies
Applications:	WB
Recommended Dilution:	WB
Reactivity:	Human
Host:	Rabbit
Isotype:	IgG
Clonality:	Polyclonal
Immunogen:	The immunogen for anti-DLC1 antibody: synthetic peptide directed towards the C terminal of human DLC1. Synthetic peptide located within the following region: NLAVCLAPSLFHLNLTALKRENSSPRVMQRKQSLGKPDQKDLNENLAATQGL
Formulation:	Liquid. Purified antibody supplied in 1x PBS buffer with 0.09% (w/v) sodium azide and 2% sucrose.
Concentration:	lot specific
Purification:	Affinity Purified
Conjugation:	Unconjugated
Storage:	Store at -20°C as received.
Stability:	Stable for 12 months from date of receipt.
Predicted Protein Size:	52 kDa
Gene Name:	DLC1 Rho GTPase activating protein
Database Link:	NP_001157743 Entrez Gene 10395 Human Q96QB1
Background:	This gene is deleted in the primary tumor of hepatocellular carcinoma. It maps to 8p22-p21.3, a region frequently deleted in solid tumors. It is suggested that this gene is a candidate tumor suppressor gene for human liver cancer, as well as for prostate, lung, colorectal, and breast cancers. DLC1 functions as a GTPase-activating protein specific for Rho and an activator of PLCD1 in vivo and induces morphological changes and detachment through cytoskeletal reorganization.

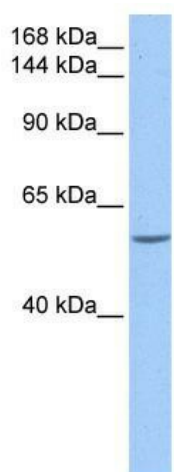


[View online »](#)

Synonyms: ARHGAP7; HP; p122-RhoGAP; STARD12

Note: Immunogen Sequence Homology: Dog: 100%; Pig: 100%; Rat: 100%; Horse: 100%; Human: 100%; Mouse: 100%; Bovine: 100%; Guinea pig: 100%; Rabbit: 93%; Zebrafish: 79%

Product images:



WB Suggested Anti-DLC1 Antibody Titration: 0.2-1 ug/ml; Positive Control: 721_B cell lysate There is BioGPS gene expression data showing that DLC1 is expressed in 721_B