

## Product datasheet for **TA340090**

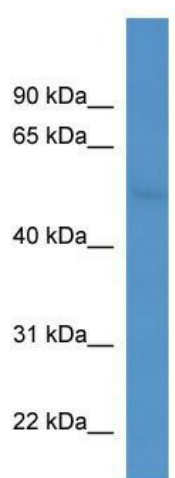
### Coro2b Rabbit Polyclonal Antibody

#### Product data:

Product Type:	Primary Antibodies
Applications:	WB
Recommended Dilution:	WB
Reactivity:	Mouse
Host:	Rabbit
Isotype:	IgG
Clonality:	Polyclonal
Immunogen:	The immunogen for anti-Coro2b antibody: synthetic peptide corresponding to a region of Mouse. Synthetic peptide located within the following region: FPFYDADTHMLYLAGKGDGNIRYYEISTEKPYLSYLMEFRSPAPQKGLGV
Formulation:	Liquid. Purified antibody supplied in 1x PBS buffer with 0.09% (w/v) sodium azide and 2% sucrose. <i>Note that this product is shipped as lyophilized powder to China customers.</i>
Concentration:	lot specific
Purification:	Affinity Purified
Conjugation:	Unconjugated
Storage:	Store at -20°C as received.
Stability:	Stable for 12 months from date of receipt.
Predicted Protein Size:	52 kDa
Gene Name:	coronin, actin binding protein, 2B
Database Link:	<a href="#">NP_780693</a> <a href="#">Entrez Gene 235431 Mouse</a> <a href="#">Q8BH44</a>
Background:	The function of this protein remains unknown.
Synonyms:	Clipin-C; CLIPINC; KIAA0925
Note:	Immunogen Sequence Homology: Pig: 100%; Rat: 100%; Horse: 100%; Human: 100%; Mouse: 100%; Bovine: 100%; Rabbit: 100%; Guinea pig: 100%; Dog: 93%; Zebrafish: 79%



[View online »](#)

**Product images:**

WB Suggested Anti-Coro2b Antibody Titration:  
0.2-1 ug/ml; ELISA Titer: 1: 62500; Positive  
Control: Mouse liver