

## Product datasheet for **TA340088**

### beta IV Tubulin (TUBB4A) Rabbit Polyclonal Antibody

#### Product data:

Product Type:	Primary Antibodies
Applications:	WB
Recommended Dilution:	WB
Reactivity:	Human
Host:	Rabbit
Isotype:	IgG
Clonality:	Polyclonal
Immunogen:	The immunogen for anti-TUBB4 antibody: synthetic peptide directed towards the N terminal of human TUBB4. Synthetic peptide located within the following region: TYHGDSLQLERINVYYNEATGGNYVPRAVLVDLEPGTMDSVRSGPFGQI
Formulation:	Liquid. Purified antibody supplied in 1x PBS buffer with 0.09% (w/v) sodium azide and 2% sucrose. <i>Note that this product is shipped as lyophilized powder to China customers.</i>
Concentration:	lot specific
Purification:	Affinity Purified
Conjugation:	Unconjugated
Storage:	Store at -20°C as received.
Stability:	Stable for 12 months from date of receipt.
Predicted Protein Size:	49
Gene Name:	tubulin beta 4A class IVa
Database Link:	<a href="#">NP_006078</a> <a href="#">Entrez Gene 10382 Human P04350</a>
Background:	Tubulin is the major constituent of microtubules. It binds two moles of GTP, one at an exchangeable site on the beta chain and one at a non-exchangeable site on the alpha-chain.
Synonyms:	beta-5; DYT4; TUBB4



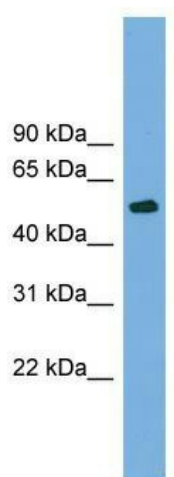
[View online »](#)

**Note:** Immunogen Sequence Homology: Dog: 100%; Pig: 100%; Rat: 100%; Horse: 100%; Human: 100%; Mouse: 100%; Bovine: 100%; Rabbit: 100%; Guinea pig: 100%; Zebrafish: 93%

**Protein Families:** Druggable Genome

**Protein Pathways:** Gap junction, Pathogenic Escherichia coli infection

**Product images:**



WB Suggested Anti-TUBB4 Antibody Titration:  
0.2-1 ug/ml; Positive Control: Jurkat cell lysate