

## Product datasheet for **TA340085**

### NET1 Rabbit Polyclonal Antibody

#### Product data:

Product Type:	Primary Antibodies
Applications:	WB
Recommended Dilution:	WB
Reactivity:	Human
Host:	Rabbit
Isotype:	IgG
Clonality:	Polyclonal
Immunogen:	The immunogen for anti-NET1 antibody: synthetic peptide directed towards the N terminal of human NET1. Synthetic peptide located within the following region: RGDHRSPASAQKFSSRSTVPTPAKRSSALWSEMLDITMKESLTTREIRR
Formulation:	Liquid. Purified antibody supplied in 1x PBS buffer with 0.09% (w/v) sodium azide and 2% sucrose. <i>Note that this product is shipped as lyophilized powder to China customers.</i>
Concentration:	lot specific
Purification:	Affinity Purified
Conjugation:	Unconjugated
Storage:	Store at -20°C as received.
Stability:	Stable for 12 months from date of receipt.
Predicted Protein Size:	62 kDa
Gene Name:	neuroepithelial cell transforming 1
Database Link:	<a href="#">NP_005854</a> <a href="#">Entrez Gene 10276 Human Q7Z628</a>
Background:	NET1 acts as guanine nucleotide exchange factor (GEF) for RhoA GTPase. It may be involved in activation of the SAPK/JNK pathway.
Synonyms:	ARHGEF8; NET1A

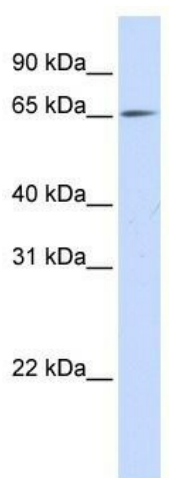


[View online »](#)

**Note:** Immunogen Sequence Homology: Human: 100%; Pig: 93%; Rat: 93%; Bovine: 93%; Rabbit: 93%; Mouse: 92%; Guinea pig: 92%; Dog: 86%; Horse: 86%

**Protein Families:** Druggable Genome

**Product images:**



WB Suggested Anti-NET1 Antibody Titration: 0.2-1 ug/ml; ELISA Titer: 1: 62500; Positive Control: 293T cell lysate. NET1 is strongly supported by BioGPS gene expression data to be expressed in Human HEK293T cells