

## Product datasheet for **TA340084**

### SA1 (STAG1) Rabbit Polyclonal Antibody

#### Product data:

Product Type:	Primary Antibodies
Applications:	WB
Recommended Dilution:	WB
Reactivity:	Human
Host:	Rabbit
Isotype:	IgG
Clonality:	Polyclonal
Immunogen:	The immunogen for Anti-STAG1 antibody is: synthetic peptide directed towards the N-terminal region of HUMAN STAG1. Synthetic peptide located within the following region: PRKSPGKESRIEAGIRGAGRGRANGHPQQNGEGEPVTLFEVVKLGKSAMQ
Formulation:	Liquid. Purified antibody supplied in 1x PBS buffer with 0.09% (w/v) sodium azide and 2% sucrose. <i>Note that this product is shipped as lyophilized powder to China customers.</i>
Concentration:	lot specific
Purification:	Affinity Purified
Conjugation:	Unconjugated
Storage:	Store at -20°C as received.
Stability:	Stable for 12 months from date of receipt.
Predicted Protein Size:	17 kDa
Gene Name:	stromal antigen 1
Database Link:	<a href="#">NP_005853</a> <a href="#">Entrez Gene 10274 Human Q8WVM7</a>
Background:	The function of this protein remains unknown.
Synonyms:	SA1; SCC3A
Note:	Immunogen Sequence Homology: Human: 100%; Mouse: 100%; Dog: 93%; Pig: 93%; Rat: 93%; Horse: 93%; Bovine: 93%; Rabbit: 93%; Guinea pig: 93%

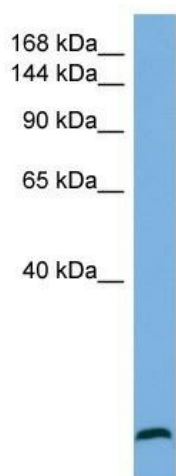


[View online »](#)

Protein Families: Druggable Genome

Protein Pathways: Cell cycle

### Product images:



Host: Rabbit

Target Name: STAG1

Sample Tissue: U937 Cell Lysate

Antibody Dilution: 1.0 $\mu$ g/ml

Host: Rabbit; Target Name: STAG1; Sample Tissue: U937 Whole Cell lysates; Antibody Dilution: 1.0 ug/ml