

Product datasheet for **TA340082**

p40 (RABEPK) Rabbit Polyclonal Antibody

Product data:

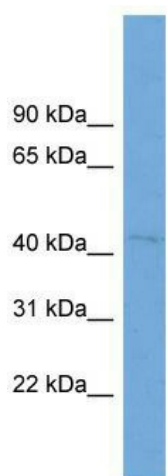
Product Type:	Primary Antibodies
Applications:	WB
Recommended Dilution:	WB
Reactivity:	Human
Host:	Rabbit
Isotype:	IgG
Clonality:	Polyclonal
Immunogen:	The immunogen for anti-RABEPK antibody: synthetic peptide directed towards the N terminal of human RABEPK. Synthetic peptide located within the following region: SCSYLPPVGNKRGKVFIVGGANPNRSFSDVHTMDLGKHQWDLDTCKGLL
Formulation:	Liquid. Purified antibody supplied in 1x PBS buffer with 0.09% (w/v) sodium azide and 2% sucrose. <i>Note that this product is shipped as lyophilized powder to China customers.</i>
Concentration:	lot specific
Purification:	Affinity Purified
Conjugation:	Unconjugated
Storage:	Store at -20°C as received.
Stability:	Stable for 12 months from date of receipt.
Predicted Protein Size:	40
Gene Name:	Rab9 effector protein with kelch motifs
Database Link:	NP_005824 Entrez Gene 10244 Human Q7Z6M1
Background:	RABEPK is a rab9 effector required for endosome to trans-Golgi network (TGN) transport.
Synonyms:	bA65N13.1; p40; RAB9P40
Note:	Immunogen Sequence Homology: Pig: 100%; Human: 100%; Rabbit: 100%; Rat: 93%; Horse: 93%; Mouse: 93%; Bovine: 93%; Guinea pig: 92%; Dog: 86%



[View online »](#)

Protein Families: Druggable Genome

Product images:



WB Suggested Anti-RABEPK Antibody Titration:
0.2-1 ug/ml; ELISA Titer: 1: 1562500; Positive
Control: HepG2 cell lysate RABEPK is supported by
BioGPS gene expression data to be expressed in
HepG2