

Product datasheet for **TA340080**

Dcaf7 Rabbit Polyclonal Antibody

Product data:

Product Type:	Primary Antibodies
Applications:	WB
Recommended Dilution:	WB
Reactivity:	Mouse
Host:	Rabbit
Isotype:	IgG
Clonality:	Polyclonal
Immunogen:	The immunogen for anti-Dcaf7 antibody: synthetic peptide corresponding to a region of Mouse. Synthetic peptide located within the following region: SLHGKRKEIYKYEAPWTVYAMNWSVRPDKRFRLLALGSEVVEEYNNKVQLVG
Formulation:	Liquid. Purified antibody supplied in 1x PBS buffer with 0.09% (w/v) sodium azide and 2% sucrose. <i>Note that this product is shipped as lyophilized powder to China customers.</i>
Concentration:	lot specific
Purification:	Affinity Purified
Conjugation:	Unconjugated
Storage:	Store at -20°C as received.
Stability:	Stable for 12 months from date of receipt.
Predicted Protein Size:	38 kDa
Gene Name:	DDB1 and CUL4 associated factor 7
Database Link:	NP_082222 Entrez Gene 71833 Mouse P61963
Background:	Dcaf7 is involved in craniofacial development. It acts upstream of the EDN1 pathway and is required for formation of the upper jaw equivalent, the palatoquadrate. The activity required for EDN1 pathway function differs between the first and second arches. It associates with DIAPH1 and controls GLI1 transcriptional activity. It could be involved in skin development. It may function as a substrate receptor for CUL4-DDB1 E3 ubiquitin-protein ligase complex.

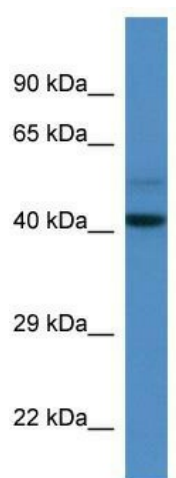


[View online »](#)

Synonyms: AN11; HAN11; SWAN-1; WDR68

Note: Immunogen Sequence Homology: Dog: 100%; Pig: 100%; Rat: 100%; Horse: 100%; Human: 100%; Mouse: 100%; Bovine: 100%; Rabbit: 100%; Zebrafish: 100%; Guinea pig: 100%

Product images:



WB Suggested Anti-Dcaf7 Antibody; Titration: 1.0 ug/ml; Positive Control: Mouse Spleen