

## Product datasheet for **TA340078**

### **DSCR1L1 (RCAN2) Rabbit Polyclonal Antibody**

#### **Product data:**

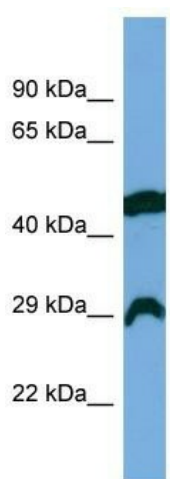
Product Type:	Primary Antibodies
Applications:	WB
Recommended Dilution:	WB
Reactivity:	Human
Host:	Rabbit
Isotype:	IgG
Clonality:	Polyclonal
Immunogen:	The immunogen for Anti-RCAN2 antibody is: synthetic peptide directed towards the middle region of HUMAN RCAN2. Synthetic peptide located within the following region: VTFQLFKSFRRVRINFSNPKSAARARIELHETQFRGKCLKLYFAQVQTPE
Formulation:	Liquid. Purified antibody supplied in 1x PBS buffer with 0.09% (w/v) sodium azide and 2% sucrose. <i>Note that this product is shipped as lyophilized powder to China customers.</i>
Concentration:	lot specific
Purification:	Affinity Purified
Conjugation:	Unconjugated
Storage:	Store at -20°C as received.
Stability:	Stable for 12 months from date of receipt.
Predicted Protein Size:	26 kDa
Gene Name:	regulator of calcineurin 2
Database Link:	<a href="#">NP_001238902</a> <a href="#">Entrez Gene 10231 Human Q14206</a>
Background:	RCAN2 inhibits calcineurin-dependent transcriptional responses by binding to the catalytic domain of calcineurin A. RCAN2 could play a role during central nervous system development.
Synonyms:	CSP2; DSCR1L1; MCIP2; RCN2; ZAKI-4; ZAKI4



[View online »](#)

**Note:** Immunogen Sequence Homology: Dog: 100%; Pig: 100%; Horse: 100%; Human: 100%; Bovine: 100%; Rabbit: 100%; Mouse: 93%; Rat: 86%; Zebrafish: 86%; Guinea pig: 86%

### Product images:



Host: Rabbit

Target Name: RCAN2

Sample Tissue: COLO205 Cell Lysate

Antibody Dilution: 1.0 $\mu$ g/ml

Host: Rabbit; Target Name: RCAN2; Sample Tissue: COLO205 Whole Cell lysates; Antibody Dilution: 1.0 ug/ml