

## Product datasheet for **TA340077**

### **TOB (TOB1) Rabbit Polyclonal Antibody**

#### **Product data:**

|                         |  |
|-------------------------|--|
| Product Type:           | Primary Antibodies   |
| Applications:           | WB   |
| Recommended Dilution:   | WB   |
| Reactivity:             | Human  |
| Host:                   | Rabbit   |
| Isotype:                | IgG  |
| Clonality:              | Polyclonal   |
| Immunogen:              | The immunogen for anti-TOB1 antibody: synthetic peptide directed towards the middle region of human TOB1. Synthetic peptide located within the following region:<br>DLLKQKAISSSMHSLYGLGLGSQQPQQQPPAQQPPPPPPPPQQQQQKT |
| Formulation:            | Liquid. Purified antibody supplied in 1x PBS buffer with 0.09% (w/v) sodium azide and 2% sucrose.<br><i>Note that this product is shipped as lyophilized powder to China customers.</i>                              |
| Concentration:          | lot specific   |
| Purification:           | Affinity Purified  |
| Conjugation:            | Unconjugated   |
| Storage:                | Store at -20°C as received.  |
| Stability:              | Stable for 12 months from date of receipt.   |
| Predicted Protein Size: | 38 kDa   |
| Gene Name:              | transducer of ERBB2, 1   |
| Database Link:          | <a href="#">NP_005740</a><br><a href="#">Entrez Gene 10140 Human P50616</a>  |



[View online »](#)

**Background:**

This gene encodes a member of the tob/btg1 family of anti-proliferative proteins that have the potential to regulate cell growth. When exogenously expressed, this protein suppresses cell growth in tissue culture. The protein undergoes phosphorylation by a serine/threonine kinase, 90 kDa ribosomal S6 kinase. Interactions of this protein with the v-erb-b2 erythroblastic leukemia viral oncogene homolog 2 gene product p185 interferes with growth suppression. This protein inhibits T cell proliferation and transcription of cytokines and cyclins. The protein interacts with both mothers against decapentaplegic Drosophila homolog 2 and 4 to enhance their DNA binding activity. This interaction inhibits interleukin 2 transcription in T cells.

**Synonyms:**

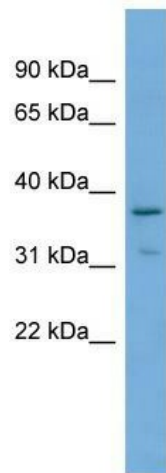
APRO5; APRO6; PIG49; TOB; TROB; TROB1

**Note:**

Immunogen Sequence Homology: Dog: 100%; Horse: 100%; Human: 100%; Yeast: 100%; Pig: 93%; Bovine: 93%; Rat: 92%; Mouse: 82%

**Protein Families:**

Druggable Genome

**Product images:**

WB Suggested Anti-TOB1 Antibody Titration: 0.2-1 ug/ml; ELISA Titer: 1: 1562500; Positive Control: Jurkat cell lysate