

## Product datasheet for **TA340076**

### PDIA6 Rabbit Polyclonal Antibody

#### Product data:

Product Type:	Primary Antibodies
Applications:	IHC, WB
Recommended Dilution:	WB, IHC
Reactivity:	Human
Host:	Rabbit
Isotype:	IgG
Clonality:	Polyclonal
Immunogen:	The immunogen for anti-PDIA6 antibody: synthetic peptide directed towards the middle region of human PDIA6. Synthetic peptide located within the following region: KLAAVDATVNQVLASRYGIRGFPTIKIFQKGESPVDYDGGRTRSDIVSRA
Formulation:	Liquid. Purified antibody supplied in 1x PBS buffer with 0.09% (w/v) sodium azide and 2% sucrose. <i>Note that this product is shipped as lyophilized powder to China customers.</i>
Concentration:	lot specific
Purification:	Affinity Purified
Conjugation:	Unconjugated
Storage:	Store at -20°C as received.
Stability:	Stable for 12 months from date of receipt.
Predicted Protein Size:	48 kDa
Gene Name:	protein disulfide isomerase family A member 6
Database Link:	<a href="#">NP_005733</a> <a href="#">Entrez Gene 10130 Human</a> <a href="#">Q15084</a>



[View online »](#)

**Background:**

Protein disulfide isomerases, such as PDIA6, are endoplasmic reticulum (ER) resident proteins that catalyze formation, reduction, and isomerization of disulfide bonds in proteins and are thought to play a role in folding of disulfide-bonded proteins. Protein disulfide isomerases (EC 5.3.4.1), such as PDIA6, are endoplasmic reticulum (ER) resident proteins that catalyze formation, reduction, and isomerization of disulfide bonds in proteins and are thought to play a role in folding of disulfide-bonded proteins (Hayano and Kikuchi, 1995 [PubMed 7590364]). [supplied by OMIM]. Publication Note: This RefSeq record includes a subset of the publications that are available for this gene. Please see the Entrez Gene record to access additional publications. PRIMARYREFSEQ\_SPAN PRIMARY\_IDENTIFIER PRIMARY\_SPAN COMP 1-39 BF979486.1 11-49 40-1858 BC001312.1 1-1819 1859-2326 AK127433.1 2215-2682 2327-2344 BM511594.1 1-18 c

**Synonyms:**

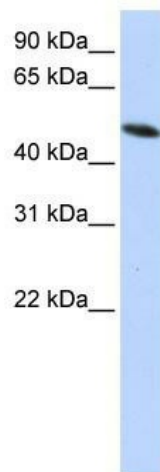
ERP5; P5; TXNDC7

**Note:**

Immunogen Sequence Homology: Pig: 100%; Rat: 100%; Horse: 100%; Human: 100%; Mouse: 100%; Bovine: 100%; Rabbit: 100%; Guinea pig: 93%; Dog: 86%

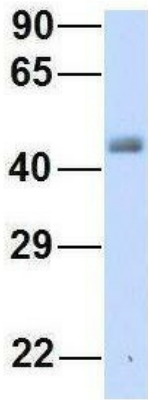
**Protein Families:**

Druggable Genome

**Product images:**

WB Suggested Anti-PDIA6 Antibody Titration: 0.2-1 ug/ml; ELISA Titer: 1: 1562500; Positive Control: HepG2 cell lysate. PDIA6 is strongly supported by BioGPS gene expression data to be expressed in HepG2

## PDIA6



Rabbit Anti-PDIA6  
Sample Type: Human Adult Placenta  
Antibody Concentration: 1ug/mL

Host: Rabbit; Target Name: PDIA6; Sample Tissue: Human Adult Placenta; Antibody Dilution: 1.0 ug/ml

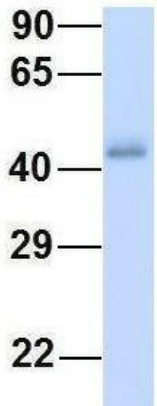
## PDIA6



Rabbit Anti-PDIA6  
Sample Type: Human Fetal Lung  
Antibody Concentration: 1ug/mL

Host: Rabbit; Target Name: PDIA6; Sample Tissue: Human Fetal Lung; Antibody Dilution: 1.0 ug/ml

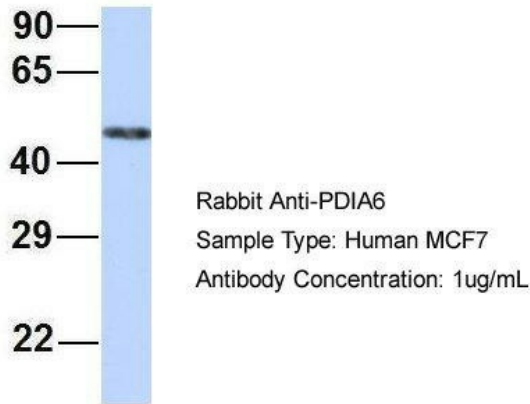
## PDIA6



Rabbit Anti-PDIA6  
Sample Type: Human Fetal Liver  
Antibody Concentration: 1ug/mL

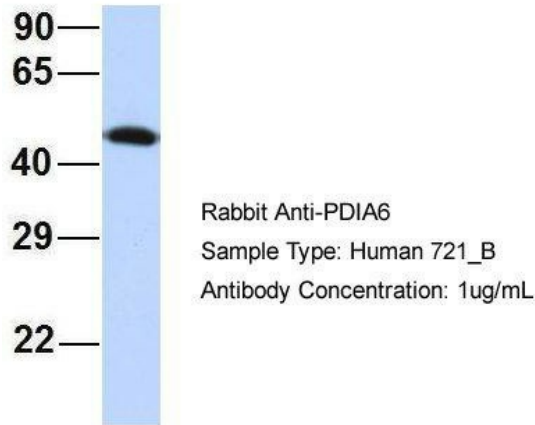
Host: Rabbit; Target Name: PDIA6; Sample Tissue: Human Fetal Liver; Antibody Dilution: 1.0 ug/ml

### PDIA6

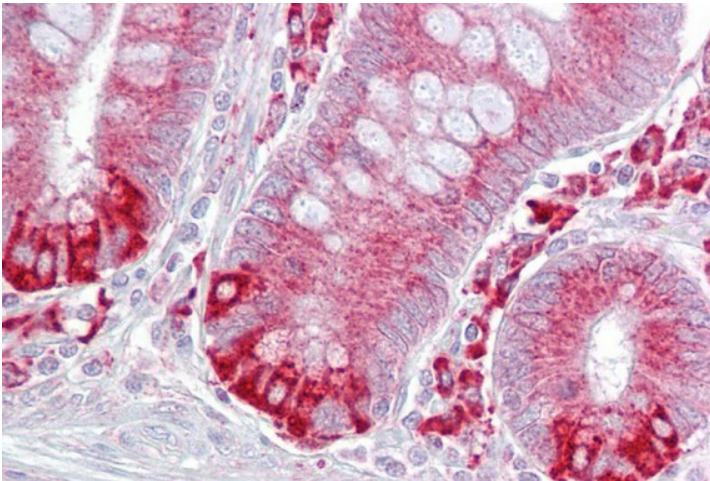


Host: Rabbit; Target Name: PDIA6; Sample Tissue: MCF7; Antibody Dilution: 1.0 ug/ml; PDIA6 is strongly supported by BioGPS gene expression data to be expressed in MCF7

### PDIA6



Host: Rabbit; Target Name: PDIA6; Sample Tissue: 721\_B; Antibody Dilution: 1.0 ug/ml; PDIA6 is strongly supported by BioGPS gene expression data to be expressed in Human 721\_B cells



Immunohistochemistry with Small intestine tissue