

## Product datasheet for **TA340075**

### PDIA6 Rabbit Polyclonal Antibody

#### Product data:

Product Type:	Primary Antibodies
Applications:	IHC, IP, WB
Recommended Dilution:	WB, IHC, IP
Reactivity:	Human, Mouse
Host:	Rabbit
Isotype:	IgG
Clonality:	Polyclonal
Immunogen:	The immunogen for anti-PDIA6 antibody: synthetic peptide directed towards the N terminal of human PDIA6. Synthetic peptide located within the following region: KNRPEDYQGGRTGEAIVDAALSALRQLVKDRLGGRSGGYSSGKQGRSDSS
Formulation:	Liquid. Purified antibody supplied in 1x PBS buffer with 0.09% (w/v) sodium azide and 2% sucrose. <i>Note that this product is shipped as lyophilized powder to China customers.</i>
Concentration:	lot specific
Purification:	Affinity Purified
Conjugation:	Unconjugated
Storage:	Store at -20°C as received.
Stability:	Stable for 12 months from date of receipt.
Predicted Protein Size:	48 kDa
Gene Name:	protein disulfide isomerase family A member 6
Database Link:	<a href="#">NP_005733</a> <a href="#">Entrez Gene 71853 Mouse</a> <a href="#">Entrez Gene 10130 Human</a> <a href="#">Q15084</a>
Background:	Protein disulfide isomerases, such as PDIA6, are endoplasmic reticulum (ER) resident proteins that catalyze formation, reduction, and isomerization of disulfide bonds in proteins and are thought to play a role in folding of disulfide-bonded proteins.
Synonyms:	ERP5; P5; TXNDC7

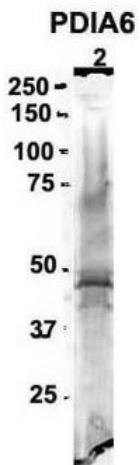


[View online »](#)

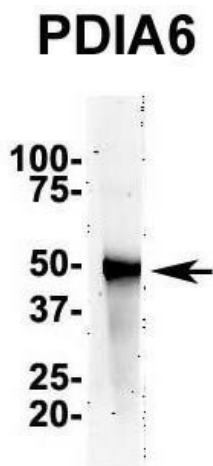
**Note:** Immunogen Sequence Homology: Rat: 100%; Horse: 100%; Human: 100%; Mouse: 100%; Dog: 93%; Pig: 93%; Bovine: 86%; Rabbit: 79%

**Protein Families:** Druggable Genome

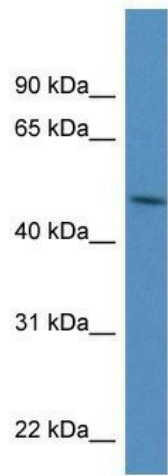
**Product images:**



Sample Type: 2. mouse brain extracts (80ug);  
 Primary Antibody Dilution: 2 ug/ml; Secondary  
 Antibody: IRDye 800CW goat anti-rabbit from Li-  
 COR Bioscience; Secondary Antibody Dilution:  
 1: 20, 000; Image Submitted by: Yuzhi Chen;  
 University of Arkansas fo

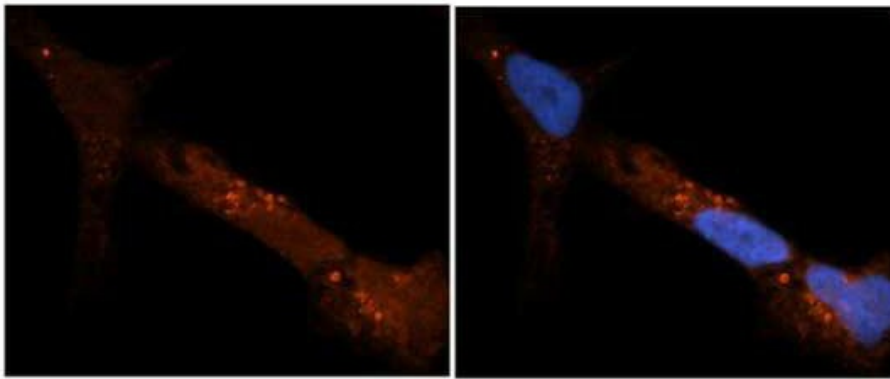


Sample Type: Mouse Brain lysate



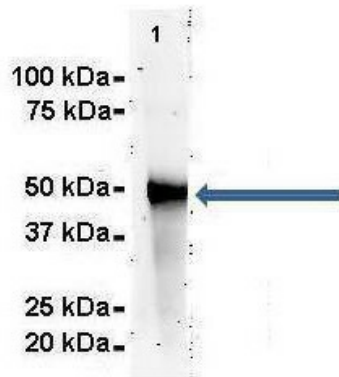
WB Suggested Anti-PDIA6 Antibody Titration: 0.2-1 ug/ml; ELISA Titer: 1: 62500; Positive Control: 721\_B cell lysate PDIA6 is strongly supported by BioGPS gene expression data to be expressed in Human 721\_B cells

## PDIA6



Sample Type: NT2 cells; Red: Antibody; Blue: DAPI; Primary Dilution: 1 ug/50ul antibody; Secondary Antibody: Alexa goat anti-rabbit 594; Image Submitted by: Yuzhi Chen, University of Arkansas for Medical Sciences

## PDIA6



Amount and Sample Type: 500 ug Human NT2 cell lysate; Amount of IP Antibody: 6 ug; Primary Antibody: PDIA6; Primary Antibody Dilution: 1: 500; Secondary Antibody: Goat anti-rabbit Alexa-Fluor 594; Secondary Antibody Dilution: 1: 5000; Gene Name: PDIA6; Su