

## Product datasheet for **TA340071**

### CTDSP2 Rabbit Polyclonal Antibody

#### Product data:

Product Type:	Primary Antibodies
Applications:	WB
Recommended Dilution:	WB
Reactivity:	Human
Host:	Rabbit
Isotype:	IgG
Clonality:	Polyclonal
Immunogen:	The immunogen for anti-CTDSP2 antibody: synthetic peptide directed towards the N terminal of human CTDSP2. Synthetic peptide located within the following region: MEHGSIIQTARREDALVLTQGLVSKSSPKKPRGRNIFKALFCCFRAQHV
Formulation:	Liquid. Purified antibody supplied in 1x PBS buffer with 0.09% (w/v) sodium azide and 2% sucrose. <i>Note that this product is shipped as lyophilized powder to China customers.</i>
Concentration:	lot specific
Purification:	Affinity Purified
Conjugation:	Unconjugated
Storage:	Store at -20°C as received.
Stability:	Stable for 12 months from date of receipt.
Predicted Protein Size:	31 kDa
Gene Name:	CTD small phosphatase 2
Database Link:	<a href="#">NP_005721</a> <a href="#">Entrez Gene 10106 Human</a> <a href="#">O14595</a>



[View online »](#)

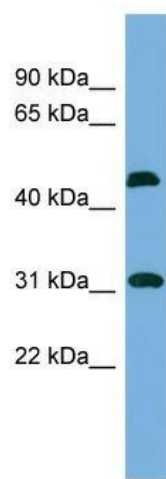
**Background:** CTDSP2 preferentially catalyzes the dephosphorylation of 'Ser-5' within the tandem 7 residues repeats in the C-terminal domain (CTD) of the largest RNA polymerase II subunit POLR2A. CTDSP2 negatively regulates RNA polymerase II transcription, possibly by controlling the transition from initiation/capping to processive transcript elongation. CTDSP2 is recruited by REST to neuronal genes that contain RE-1 elements, leading to neuronal gene silencing in non-neuronal cells. CTDSP2 may contribute to the development of sarcomas.

**Synonyms:** OS4; PSR2; SCP2

**Note:** Immunogen Sequence Homology: Dog: 100%; Pig: 100%; Rat: 100%; Horse: 100%; Human: 100%; Bovine: 100%; Rabbit: 100%; Guinea pig: 100%; Mouse: 93%; Zebrafish: 79%

**Protein Families:** Druggable Genome, Phosphatase

### Product images:



WB Suggested Anti-CTDSP2 Antibody Titration:  
0.2-1 ug/ml; Positive Control: Human kidney