

Product datasheet for **TA340067**

EDIL3 Rabbit Polyclonal Antibody

Product data:

Product Type:	Primary Antibodies
Applications:	WB
Recommended Dilution:	WB
Reactivity:	Human
Host:	Rabbit
Isotype:	IgG
Clonality:	Polyclonal
Immunogen:	The immunogen for anti-EDIL3 antibody: synthetic peptide directed towards the N terminal of human EDIL3. Synthetic peptide located within the following region: EPTSAGPCTPNPCHNGGTCEISEAYRGDTFIGYVCKCPRGFNGIHCQHNI
Formulation:	Liquid. Purified antibody supplied in 1x PBS buffer with 0.09% (w/v) sodium azide and 2% sucrose. <i>Note that this product is shipped as lyophilized powder to China customers.</i>
Concentration:	lot specific
Purification:	Affinity Purified
Conjugation:	Unconjugated
Storage:	Store at -20°C as received.
Stability:	Stable for 12 months from date of receipt.
Predicted Protein Size:	54 kDa
Gene Name:	EGF like repeats and discoidin domains 3
Database Link:	NP_005702 Entrez Gene 10085 Human O43854
Background:	The protein encoded by this gene is an integrin ligand. It plays an important role in mediating angiogenesis and may be important in vessel wall remodeling and development. It also influences endothelial cell behavior.
Synonyms:	DEL1

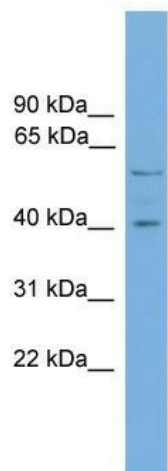


[View online »](#)

Note: Immunogen Sequence Homology: Dog: 100%; Pig: 100%; Rat: 100%; Human: 100%; Mouse: 100%; Bovine: 100%; Rabbit: 100%; Guinea pig: 100%; Horse: 93%; Zebrafish: 86%

Protein Families: Druggable Genome, Secreted Protein

Product images:



WB Suggested Anti-EDIL3 Antibody Titration: 0.2-1 ug/ml; Positive Control: 293T cell lysate