

Product datasheet for **TA340066**

DOM3Z (DXO) Rabbit Polyclonal Antibody

Product data:

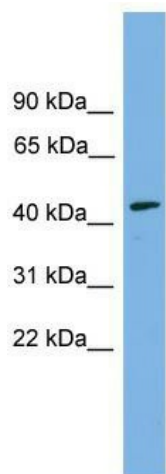
Product Type:	Primary Antibodies
Applications:	WB
Recommended Dilution:	WB
Reactivity:	Human
Host:	Rabbit
Isotype:	IgG
Clonality:	Polyclonal
Immunogen:	The immunogen for anti-DOM3Z antibody: synthetic peptide directed towards the N terminal of human DOM3Z. Synthetic peptide located within the following region: LYSGPFPFYRRPSELGCFSLDAQRYHGDARALRYSPPTNGPGPNFDL
Formulation:	Liquid. Purified antibody supplied in 1x PBS buffer with 0.09% (w/v) sodium azide and 2% sucrose.
Concentration:	lot specific
Purification:	Affinity Purified
Conjugation:	Unconjugated
Storage:	Store at -20°C as received.
Stability:	Stable for 12 months from date of receipt.
Predicted Protein Size:	45 kDa
Gene Name:	decapping exoribonuclease
Database Link:	NP_005501 Entrez Gene 1797 Human O77932
Background:	This gene localizes to the major histocompatibility complex (MHC) class III region on chromosome 6. The function of its protein product is unknown, but its ubiquitous expression and conservation in both simple and complex eukaryotes suggests that this may be a housekeeping gene.
Synonyms:	DOM3L; DOM3Z; NG6; RAI1



[View online »](#)

Note: Immunogen Sequence Homology: Rat: 100%; Horse: 100%; Human: 100%; Mouse: 100%; Bovine: 100%; Rabbit: 100%; Dog: 93%; Pig: 93%; Guinea pig: 86%

Product images:



WB Suggested Anti-DOM3Z Antibody Titration:
0.2-1 ug/ml; Positive Control: COLO205 cell lysate