

Product datasheet for **TA340065**

AP1M2 Rabbit Polyclonal Antibody

Product data:

Product Type:	Primary Antibodies
Applications:	WB
Recommended Dilution:	WB
Reactivity:	Human
Host:	Rabbit
Isotype:	IgG
Clonality:	Polyclonal
Immunogen:	The immunogen for anti-AP1M2 antibody: synthetic peptide directed towards the N terminal of human AP1M2. Synthetic peptide located within the following region: MSASAVFILDVKGKPLISRNYKGDVAMSKIEHFMPLLVQREEEGALAPLL
Formulation:	Liquid. Purified antibody supplied in 1x PBS buffer with 0.09% (w/v) sodium azide and 2% sucrose. <i>Note that this product is shipped as lyophilized powder to China customers.</i>
Concentration:	lot specific
Purification:	Affinity Purified
Conjugation:	Unconjugated
Storage:	Store at -20°C as received.
Stability:	Stable for 12 months from date of receipt.
Predicted Protein Size:	48 kDa
Gene Name:	adaptor related protein complex 1 mu 2 subunit
Database Link:	NP_005489 Entrez Gene 10053 Human Q9Y6Q5
Background:	This gene encodes a subunit of the heterotetrameric adaptor-related protein complex 1 (AP-1), which belongs to the adaptor complexes medium subunits family. This protein is capable of interacting with tyrosine-based sorting signals.
Synonyms:	AP1-mu2; HSMU1B; MU-1B; MU1B; mu2

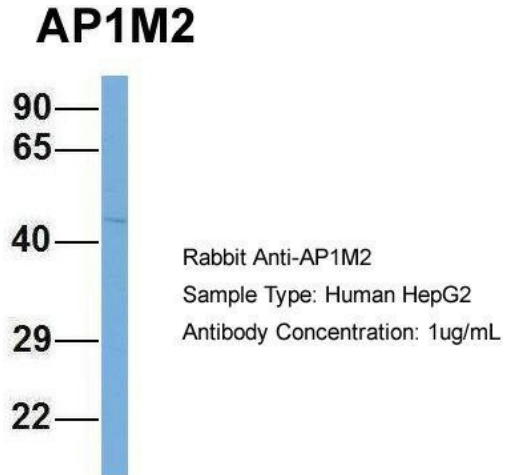


[View online »](#)

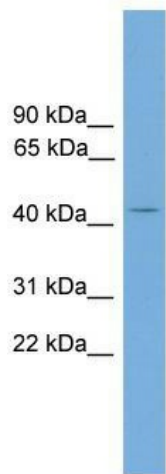
Note: Immunogen Sequence Homology: Dog: 100%; Pig: 100%; Rat: 100%; Horse: 100%; Human: 100%; Mouse: 100%; Bovine: 100%; Guinea pig: 100%; Zebrafish: 86%; Yeast: 83%; Rabbit: 79%

Protein Pathways: Lysosome

Product images:



Host: Rabbit; Target Name: AP1M2; Sample Tissue: HepG2; Antibody Dilution: 1.0 ug/ml; AP1M2 is strongly supported by BioGPS gene expression data to be expressed in HepG2



WB Suggested Anti-AP1M2 Antibody Titration: 0.2-1 ug/ml; Positive Control: 721_B cell lysate AP1M2 is strongly supported by BioGPS gene expression data to be expressed in Human 721_B cells