

Product datasheet for **TA340061**

INSL5 Rabbit Polyclonal Antibody

Product data:

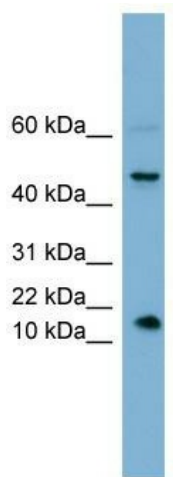
Product Type:	Primary Antibodies
Applications:	WB
Recommended Dilution:	WB
Reactivity:	Human
Host:	Rabbit
Isotype:	IgG
Clonality:	Polyclonal
Immunogen:	The immunogen for anti-INSL5 antibody: synthetic peptide directed towards the middle region of human INSL5. Synthetic peptide located within the following region: RTVIYICASSRWRRHQEGIPQAQQAETGNSFQLPHKREFSEENPAQNLPK
Formulation:	Liquid. Purified antibody supplied in 1x PBS buffer with 0.09% (w/v) sodium azide and 2% sucrose. <i>Note that this product is shipped as lyophilized powder to China customers.</i>
Concentration:	lot specific
Purification:	Affinity Purified
Conjugation:	Unconjugated
Storage:	Store at -20°C as received.
Stability:	Stable for 12 months from date of receipt.
Predicted Protein Size:	13 kDa
Gene Name:	insulin like 5
Database Link:	NP_005469 Entrez Gene 10022 Human Q9Y5Q6
Background:	The protein encoded by this gene contains a classical signature of the insulin superfamily and is highly similar to relaxin 3 (RLN3/INSL7).
Synonyms:	PRO182; UNQ156
Note:	Immunogen Sequence Homology: Human: 100%; Rabbit: 79%



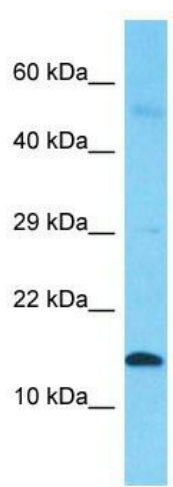
[View online »](#)

Protein Families: Secreted Protein

Product images:



WB Suggested Anti-INSL5 Antibody Titration: 0.2-1 ug/ml; ELISA Titer: 1: 312500; Positive Control: Hela cell lysate



Host: Rabbit
 Target Name: INSL5
 Sample Tissue: Fetal Lung Lysate
 Antibody Dilution: 1.0µg/ml

Host: Rabbit; Target Name: INSL5; Sample Tissue: Fetal Lung lysates; Antibody Dilution: 1.0 ug/ml