

Product datasheet for **TA340060**

CSN3 Rabbit Polyclonal Antibody

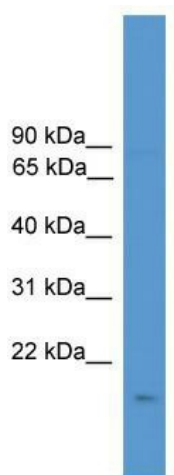
Product data:

Product Type:	Primary Antibodies
Applications:	WB
Recommended Dilution:	WB
Reactivity:	Human
Host:	Rabbit
Isotype:	IgG
Clonality:	Polyclonal
Immunogen:	The immunogen for anti-CSN3 antibody: synthetic peptide directed towards the N terminal of human CSN3. Synthetic peptide located within the following region: MKSFLLVNALALTLPLAVEVQNQKQPACHENDERPFYQKTAPYVPMYY
Formulation:	Liquid. Purified antibody supplied in 1x PBS buffer with 0.09% (w/v) sodium azide and 2% sucrose.
Concentration:	lot specific
Purification:	Affinity Purified
Conjugation:	Unconjugated
Storage:	Store at -20°C as received.
Stability:	Stable for 12 months from date of receipt.
Predicted Protein Size:	20 kDa
Gene Name:	casein kappa
Database Link:	NP_005203 Entrez Gene 1448 Human P07498
Background:	Kappa-casein stabilizes micelle formation, preventing casein precipitation in milk.
Synonyms:	CSN10; CSNK; KCA
Note:	Immunogen Sequence Homology: Human: 100%
Protein Families:	Secreted Protein



[View online »](#)

Product images:



WB Suggested Anti-CSN3 Antibody Titration: 0.2-1 ug/ml; ELISA Titer: 1: 1562500; Positive Control: Jurkat cell lysate