

Product datasheet for **TA340057**

DOCK2 Rabbit Polyclonal Antibody

Product data:

Product Type:	Primary Antibodies
Applications:	WB
Recommended Dilution:	WB
Reactivity:	Human
Host:	Rabbit
Isotype:	IgG
Clonality:	Polyclonal
Immunogen:	The immunogen for anti-DOCK2 antibody: synthetic peptide directed towards the middle region of human DOCK2. Synthetic peptide located within the following region: ALALSVAGIPGLDEANTSPRLSQTFLQLSDGDKKTLTRKKVNQFFKTMLA
Formulation:	Liquid. Purified antibody supplied in 1x PBS buffer with 0.09% (w/v) sodium azide and 2% sucrose. <i>Note that this product is shipped as lyophilized powder to China customers.</i>
Concentration:	lot specific
Purification:	Affinity Purified
Conjugation:	Unconjugated
Storage:	Store at -20°C as received.
Stability:	Stable for 12 months from date of receipt.
Predicted Protein Size:	212 kDa
Gene Name:	dedicator of cytokinesis 2
Database Link:	NP_004937 Entrez Gene 1794 Human Q92608
Background:	The DOCK2 gene encodes a hematopoietic cell-specific CDM family protein that is indispensable for lymphocyte chemotaxis.
Synonyms:	FLJ46592; KIAA0209



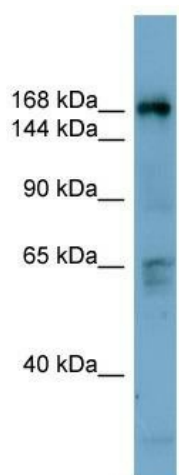
[View online »](#)

Note: Immunogen Sequence Homology: Human: 100%; Mouse: 100%; Pig: 92%; Rat: 92%; Rabbit: 92%; Guinea pig: 92%; Bovine: 86%; Dog: 79%

Protein Families: Druggable Genome

Protein Pathways: Chemokine signaling pathway, Fc gamma R-mediated phagocytosis

Product images:



WB Suggested Anti-DOCK2 Antibody Titration:
0.2-1 ug/ml; ELISA Titer: 1: 1562500; Positive
Control: THP-1 cell lysate