

Product datasheet for **TA340051**

DFFB Rabbit Polyclonal Antibody

Product data:

Product Type:	Primary Antibodies
Applications:	WB
Recommended Dilution:	WB
Reactivity:	Human
Host:	Rabbit
Isotype:	IgG
Clonality:	Polyclonal
Immunogen:	The immunogen for anti-DFFB antibody: synthetic peptide directed towards the middle region of human DFFB. Synthetic peptide located within the following region: EYFYGLLFTSENKLVHIVCHKKTTHKLNCDPSRIYKPQTRLKRKQPVRK
Formulation:	Liquid. Purified antibody supplied in 1x PBS buffer with 0.09% (w/v) sodium azide and 2% sucrose. <i>Note that this product is shipped as lyophilized powder to China customers.</i>
Concentration:	lot specific
Purification:	Affinity Purified
Conjugation:	Unconjugated
Storage:	Store at -20°C as received.
Stability:	Stable for 12 months from date of receipt.
Predicted Protein Size:	39 kDa
Gene Name:	DNA fragmentation factor subunit beta
Database Link:	NP_004393 Entrez Gene 1677 Human O76075



[View online »](#)

Background:

DFFB is a nuclease that induces DNA fragmentation and chromatin condensation during apoptosis. DFFB degrades naked DNA and induces apoptotic morphology. Apoptosis is a cell death process that removes toxic and/or useless cells during mammalian development. The apoptotic process is accompanied by shrinkage and fragmentation of the cells and nuclei and degradation of the chromosomal DNA into nucleosomal units. DNA fragmentation factor (DFF) is a heterodimeric protein of 40-kD (DFFB) and 45-kD (DFFA) subunits. DFFA is the substrate for caspase-3 and triggers DNA fragmentation during apoptosis. DFF becomes activated when DFFA is cleaved by caspase-3. The cleaved fragments of DFFA dissociate from DFFB, the active component of DFF. DFFB has been found to trigger both DNA fragmentation and chromatin condensation during apoptosis. Alternatively spliced transcript variants encoding distinct isoforms have been found for this gene but the biological validity of these variants has not been determined. Publication Note: This RefSeq record includes a subset of the publications that are available for this gene. Please see the Entrez Gene record to access additional publications.

Synonyms:

CAD; CPAN; DFF-40; DFF2; DFF40

Note:

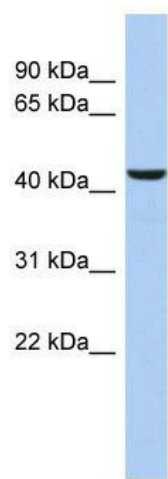
Immunogen Sequence Homology: Human: 100%

Protein Families:

Druggable Genome

Protein Pathways:

Apoptosis

Product images:

WB Suggested Anti-DFFB Antibody Titration: 0.2-1 ug/ml; ELISA Titer: 1: 12500; Positive Control: HT1080 cell lysate