

Product datasheet for **TA340049**

CSK Rabbit Polyclonal Antibody

Product data:

Product Type:	Primary Antibodies
Applications:	WB
Recommended Dilution:	WB
Reactivity:	Human, Mouse
Host:	Rabbit
Isotype:	IgG
Clonality:	Polyclonal
Immunogen:	The immunogen for anti-CSK antibody: synthetic peptide directed towards the middle region of human CSK. Synthetic peptide located within the following region: SEDNVAKVSDFGLTKEASSTQDTGKLPVKWTAPEALREKKFSTKSDVWSF
Formulation:	Liquid. Purified antibody supplied in 1x PBS buffer with 0.09% (w/v) sodium azide and 2% sucrose. <i>Note that this product is shipped as lyophilized powder to China customers.</i>
Concentration:	lot specific
Purification:	Affinity Purified
Conjugation:	Unconjugated
Storage:	Store at -20°C as received.
Stability:	Stable for 12 months from date of receipt.
Predicted Protein Size:	51 kDa
Gene Name:	c-src tyrosine kinase
Database Link:	NP_004374 Entrez Gene 12988 Mouse Entrez Gene 1445 Human P41240
Background:	CSK specifically phosphorylates 'Tyr-504' on LCK, which acts as a negative regulatory site. CSK can also act on the LYN and FYN kinases.
Synonyms:	MGC117393



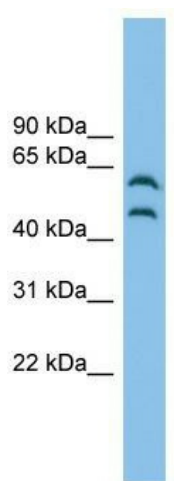
[View online »](#)

Note: Immunogen Sequence Homology: Dog: 100%; Pig: 100%; Rat: 100%; Horse: 100%; Human: 100%; Mouse: 100%; Bovine: 100%; Zebrafish: 100%; Guinea pig: 100%

Protein Families: Druggable Genome, Protein Kinase

Protein Pathways: Chemokine signaling pathway, Epithelial cell signaling in Helicobacter pylori infection, Neurotrophin signaling pathway, Regulation of actin cytoskeleton

Product images:



WB Suggested Anti-CSK Antibody Titration: 0.2-1 ug/ml; ELISA Titer: 1: 1562500; Positive Control: Human heart